

## CCDC106 Antibody

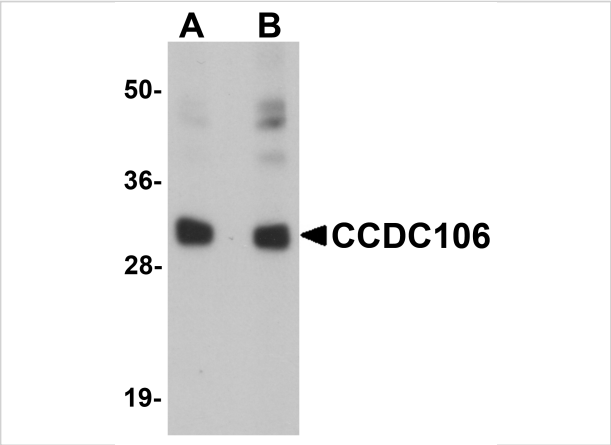
CATALOG NUMBER: 5865

### Specifications

Host Species	Rabbit
Species Reactivity	Human, Mouse, Rat
Homology	Predicted species reactivity based on immunogen sequence: Bovine: (100%)
Immunogen	CCDC106 antibody was raised against a 15 amino acid synthetic peptide near the carboxy terminus of human CCDC106. The immunogen is located within the last 50 amino acids of CCDC106.
Conjugate	Unconjugated
Tested Applications	ELISA, IF, IHC-P, WB
User Note	Optimal dilutions for each application to be determined by the researcher.

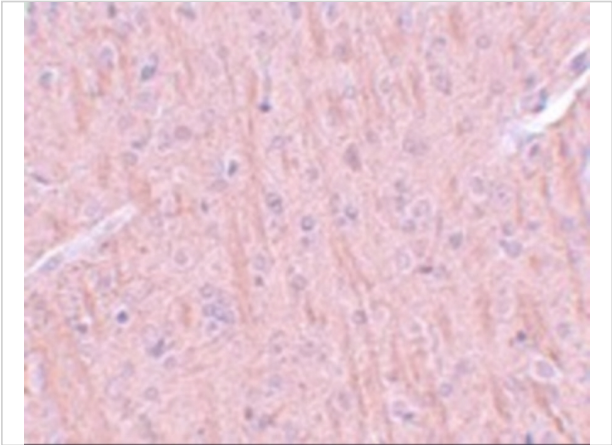
### Properties

Purification	CCDC106 Antibody is affinity chromatography purified via peptide column.
Clonality	Polyclonal
Isotype	IgG
Physical State	Liquid
Buffer	CCDC106 Antibody is supplied in PBS containing 0.02% sodium azide.
Concentration	1 mg/mL
Storage Conditions	CCDC106 antibody can be stored at 4°C for three months and -20°C, stable for up to one year. As with all antibodies care should be taken to avoid repeated freeze thaw cycles. Antibodies should not be exposed to prolonged high temperatures.



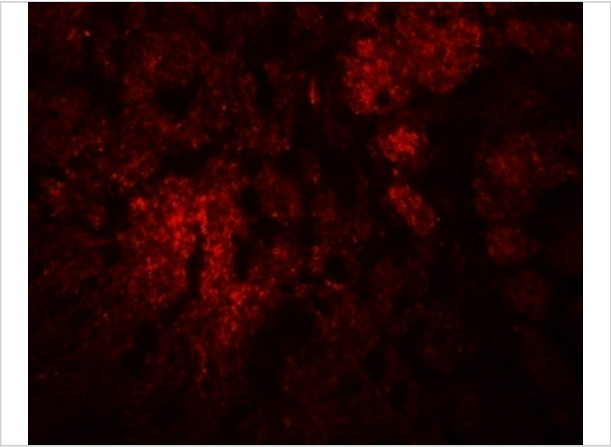
**CCDC106 Antibody 1**

Western blot analysis of CCDC106 in human brain tissue lysate with CCDC106 antibody at (A) 0.5 and (B) 1 µg/mL.



**CCDC106 Antibody 2**

Immunohistochemistry of CCDC106 in rat brain tissue with CCDC106 antibody at 5 µg/mL.



**CCDC106 Antibody 3**

Immunofluorescence of CCDC106 in rat brain tissue with CCDC106 antibody at 20 µg/mL.

**Disclaimer**

<b>Disclaimer</b>	Optimal dilutions/concentrations should be determined by the end user. The information provided is a guideline for product use. This product is for research use only.
-------------------	--

For research use only. For additional information, visit ProSci's [Terms and Conditions Page](#).