

SCRN1 Antibody

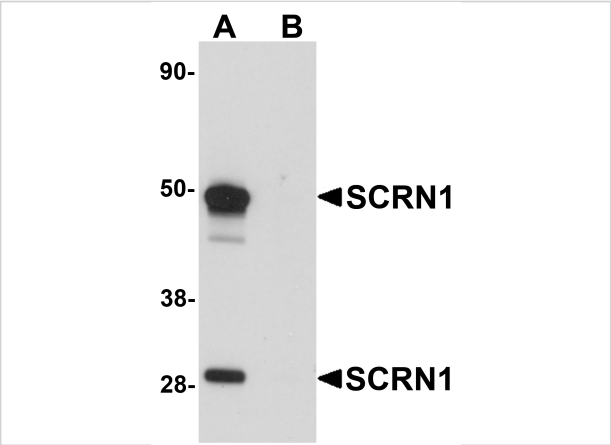
CATALOG NUMBER: 5849

Specifications

Host Species	Rabbit
Species Reactivity	Human, Mouse, Rat
Homology	Predicted species reactivity based on immunogen sequence: Bovine: (100%)
Immunogen	SCRN1 antibody was raised against a 20 amino acid synthetic peptide near the carboxy terminus of human SCR1. The immunogen is located within amino acids 320 - 370 of SCR1.
Conjugate	Unconjugated
Tested Applications	ELISA, IF, IHC-P, WB
User Note	Optimal dilutions for each application to be determined by the researcher.

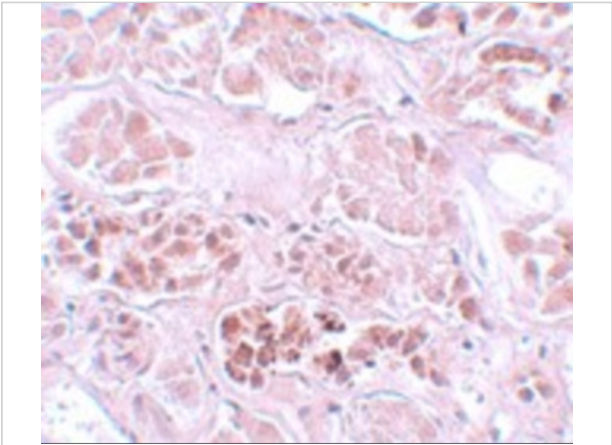
Properties

Purification	SCRN1 Antibody is affinity chromatography purified via peptide column.
Clonality	Polyclonal
Isotype	IgG
Physical State	Liquid
Buffer	SCRN1 Antibody is supplied in PBS containing 0.02% sodium azide.
Concentration	1 mg/mL
Storage Conditions	SCRN1 antibody can be stored at 4°C for three months and -20°C, stable for up to one year. As with all antibodies care should be taken to avoid repeated freeze thaw cycles. Antibodies should not be exposed to prolonged high temperatures.



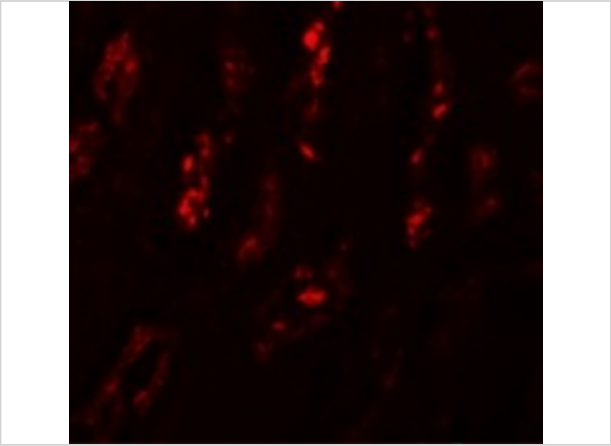
SCRIN1 Antibody 1

Western blot analysis of SCRIN1 in human kidney tissue lysate with SCRIN1 antibody at 1 µg/mL in (A) the absence and (B) the presence of blocking peptide.



SCRIN1 Antibody 2

Immunohistochemistry of SCRIN1 in human kidney tissue with SCRIN1 antibody at 5 µg/mL.



SCRIN1 Antibody 3

Immunofluorescence of SCRIN1 in Human Kidney cells with SCRIN1 antibody at 20 µg/mL.

Disclaimer

Disclaimer	Optimal dilutions/concentrations should be determined by the end user. The information provided is a guideline for product use. This product is for research use only.
------------	------------------------------------------------------------------------------------------------------------------------------------------------------------------------

For research use only. For additional information, visit ProSci's [Terms and Conditions Page](#).