

ZEB2 Antibody

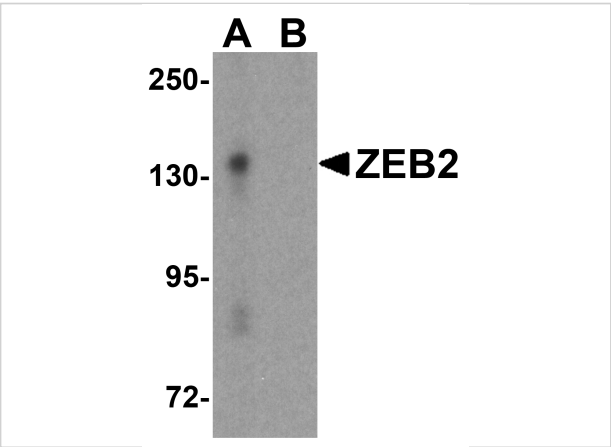
CATALOG NUMBER: 5827

Specifications

Host Species	Rabbit
Species Reactivity	Human, Mouse, Rat
Immunogen	ZEB2 antibody was raised against an 18 amino acid synthetic peptide near the carboxy terminus of human ZEB2. The immunogen is located within the last 50 amino acids of ZEB2.
Conjugate	Unconjugated
Tested Applications	ELISA, ICC, IF, WB
User Note	Optimal dilutions for each application to be determined by the researcher.
Specificity	ZEB2 antibody is predicted to not cross-react with ZEB1.
Predicted Molecular Weight	Predicted: 134 kDa Observed: 135 kDa

Properties

Purification	ZEB2 Antibody is affinity chromatography purified via peptide column.
Clonality	Polyclonal
Isotype	IgG
Physical State	Liquid
Buffer	ZEB2 Antibody is supplied in PBS containing 0.02% sodium azide.
Concentration	1 mg/mL
Storage Conditions	ZEB2 antibody can be stored at 4°C for three months and -20°C, stable for up to one year. As with all antibodies care should be taken to avoid repeated freeze thaw cycles. Antibodies should not be exposed to prolonged high temperatures.



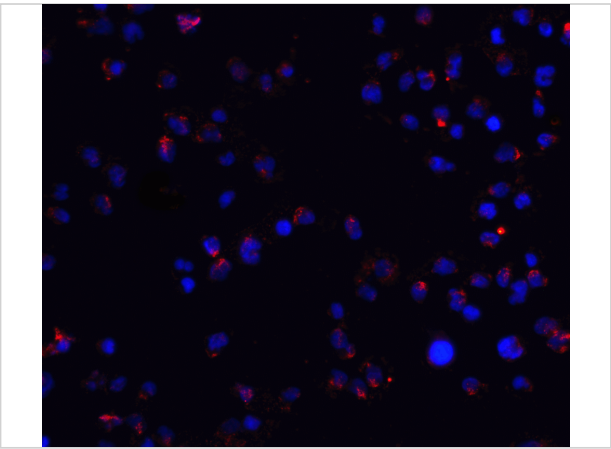
ZEB2 Antibody 1

Western blot analysis of ZEB2 in EL4 cell lysate with ZEB2 antibody at 1 µg/mL in (A) the absence and (B) the presence of blocking peptide.



ZEB2 Antibody 2

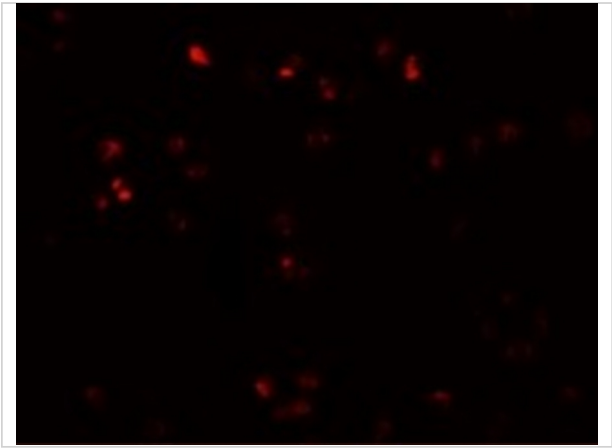
Immunocytochemistry of ZEB2 in Jurkat cells with ZEB2 antibody at 20 µg/mL.



ZEB2 Antibody 3

Immunofluorescence of ZEB2 in Jurkat cells with ZEB2 antibody at 20 µg/mL.

Red: ZEB2 Antibody (5827)
Blue: DAPI staining



ZEB2 Antibody 4

Immunofluorescence of ZEB2 in Jurkat cells with ZEB2 antibody at 20 µg/mL.

Disclaimer

Disclaimer	Optimal dilutions/concentrations should be determined by the end user. The information provided is a guideline for product use. This product is for research use only.
------------	--

For research use only. For additional information, visit ProSci's [Terms and Conditions Page](#).