

ATG9B Antibody

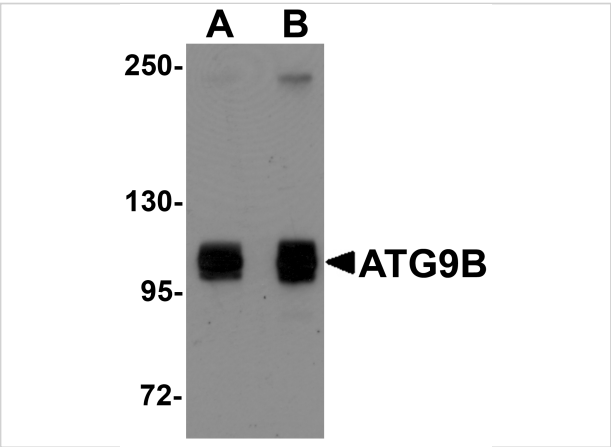
CATALOG NUMBER: 5797

Specifications

Host Species	Rabbit
Species Reactivity	Human, Mouse, Rat
Immunogen	ATG9B antibody was raised against a 17 amino acid synthetic peptide near the carboxy terminus of human ATG9B. The immunogen is located within amino acids 850 - 900 of ATG9B.
Conjugate	Unconjugated
Tested Applications	ELISA, ICC, IF, WB
User Note	Optimal dilutions for each application to be determined by the researcher.

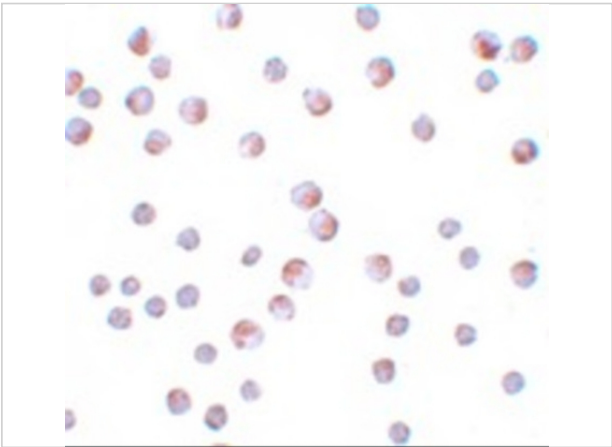
Properties

Purification	ATG9B Antibody is affinity chromatography purified via peptide column.
Clonality	Polyclonal
Isotype	IgG
Physical State	Liquid
Buffer	ATG9B Antibody is supplied in PBS containing 0.02% sodium azide.
Concentration	1 mg/mL
Storage Conditions	ATG9B antibody can be stored at 4°C for three months and -20°C, stable for up to one year. As with all antibodies care should be taken to avoid repeated freeze thaw cycles. Antibodies should not be exposed to prolonged high temperatures.



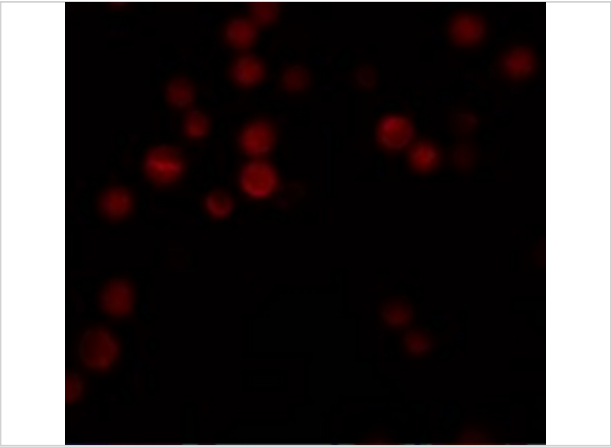
ATG9B Antibody 1

Western blot analysis of ATG9B in HeLa cell lysate with ATG9B antibody at (A) 1 and (B) 2 µg/mL.



ATG9B Antibody 2

Immunocytochemistry of ATG9B in HeLa cells with ATG9B antibody at 10 µg/mL.



ATG9B Antibody 3

Immunofluorescence of ATG9B in HeLa cells with ATG9B antibody at 20 µg/mL.

Disclaimer

Disclaimer	Optimal dilutions/concentrations should be determined by the end user. The information provided is a guideline for product use. This product is for research use only.
-------------------	--

For research use only. For additional information, visit ProSci's [Terms and Conditions Page](#).