

SIRT6 Antibody

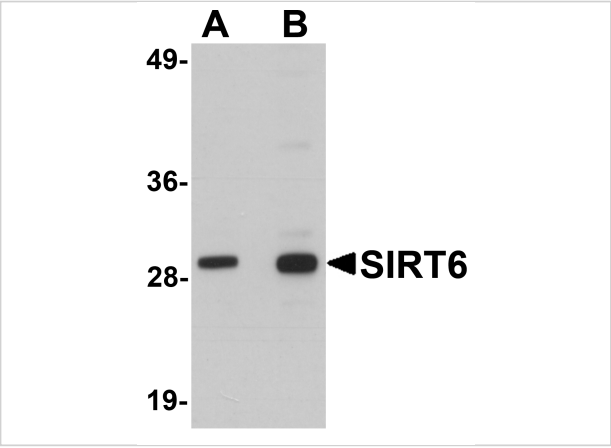
CATALOG NUMBER: 5773

Specifications

Host Species	Chicken
Species Reactivity	Human, Mouse, Rat
Immunogen	SIRT6 antibody was raised against a 17 amino acid synthetic peptide near the carboxy terminus of human SIRT6. The immunogen is located within the last 50 amino acids of SIRT6.
Conjugate	Unconjugated
Tested Applications	ELISA, WB
User Note	Optimal dilutions for each application to be determined by the researcher.

Properties

Purification	SIRT6 Antibody is affinity chromatography purified via peptide column.
Clonality	Polyclonal
Isotype	IgY
Physical State	Liquid
Buffer	SIRT6 Antibody is supplied in PBS containing 0.02% sodium azide.
Concentration	1 mg/mL
Storage Conditions	SIRT6 antibody can be stored at 4°C for three months and -20°C, stable for up to one year. As with all antibodies care should be taken to avoid repeated freeze thaw cycles. Antibodies should not be exposed to prolonged high temperatures.



SIRT6 Antibody 1

Western blot analysis of SIRT6 in HeLa cell lysate with SIRT6 antibody at (A) 0.5 and (B) 1 µg/mL.

Disclaimer

Disclaimer	Optimal dilutions/concentrations should be determined by the end user. The information provided is a guideline for product use. This product is for research use only.
------------	--

For research use only. For additional information, visit ProSci's [Terms and Conditions Page](#).