

SUMO3 Antibody

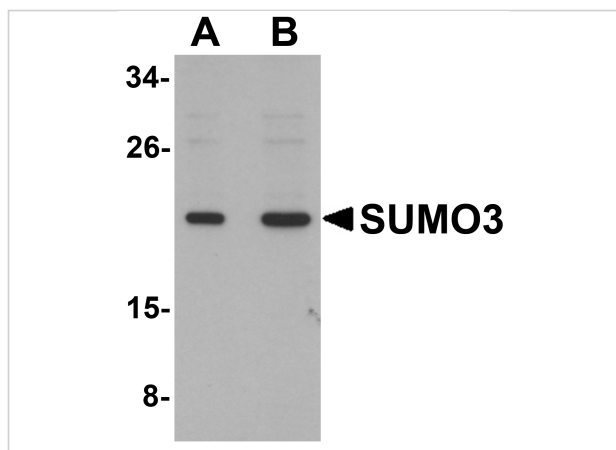
CATALOG NUMBER: 5757

Specifications

Host Species	Rabbit
Species Reactivity	Human, Mouse, Rat
Immunogen	SUMO3 antibody was raised against a 13 amino acid synthetic peptide near the carboxy terminus of human SUMO3. The immunogen is located within the last 50 amino acids of SUMO3.
Conjugate	Unconjugated
Tested Applications	ELISA, IF, IHC-P, WB
User Note	Optimal dilutions for each application to be determined by the researcher.

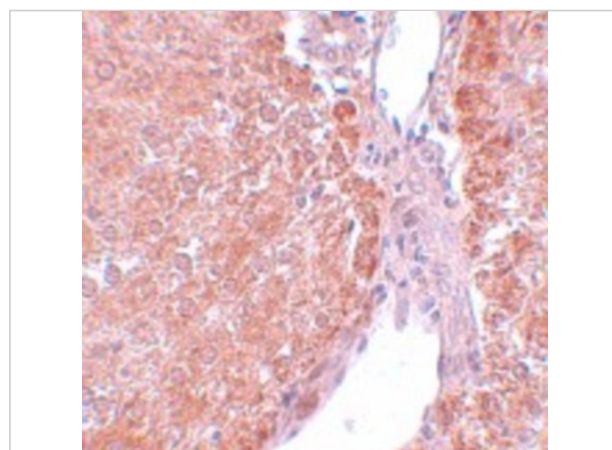
Properties

Purification	SUMO3 Antibody is affinity chromatography purified via peptide column.
Clonality	Polyclonal
Isotype	IgG
Physical State	Liquid
Buffer	SUMO3 Antibody is supplied in PBS containing 0.02% sodium azide.
Concentration	1 mg/mL
Storage Conditions	SUMO3 antibody can be stored at 4°C for three months and -20°C, stable for up to one year. As with all antibodies care should be taken to avoid repeated freeze thaw cycles. Antibodies should not be exposed to prolonged high temperatures.



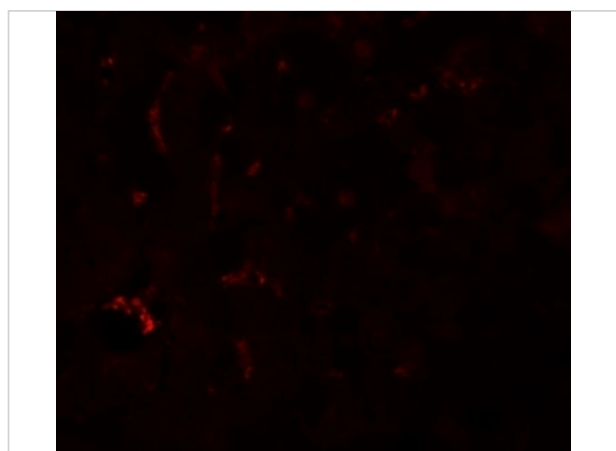
SUMO3 Antibody 1

Western blot analysis of SUMO3 in mouse liver tissue lysate with SUMO3 antibody at (A) and (B) 2 µg/mL.



SUMO3 Antibody 2

Immunohistochemistry of SUMO2/3 in rat liver tissue with SUMO2/3 antibody at 5 µg/mL.



SUMO3 Antibody 3

Immunofluorescence of SUMO3 in mouse liver tissue with SUMO3 antibody at 20 µg/mL.

Disclaimer

Disclaimer

Optimal dilutions/concentrations should be determined by the end user. The information provided is a guideline for product use. This product is for research use only.

For research use only. For additional information, visit ProSci's [Terms and Conditions Page](#).