

## SUMO2/3 Antibody

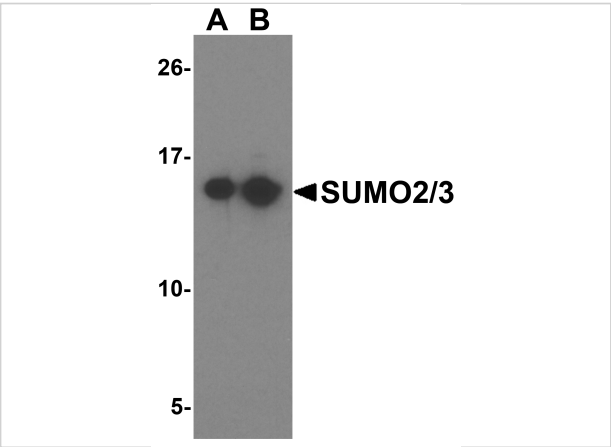
CATALOG NUMBER: 5755

### Specifications

Host Species	Rabbit
Species Reactivity	Human, Mouse, Rat
Homology	Predicted species reactivity based on immunogen sequence: Bovine: (100%), Chicken: (93%), Pig: (93%)
Immunogen	SUMO2/3 antibody was raised against a 15 amino acid synthetic peptide near the carboxy terminus of human SUMO2. The immunogen is located within the last 50 amino acids of SUMO2/3.
Conjugate	Unconjugated
Tested Applications	ELISA, IF, IHC-P, WB
User Note	Optimal dilutions for each application to be determined by the researcher.
Predicted Molecular Weight	Predicted: 15 kDa Observed: 15 kDa

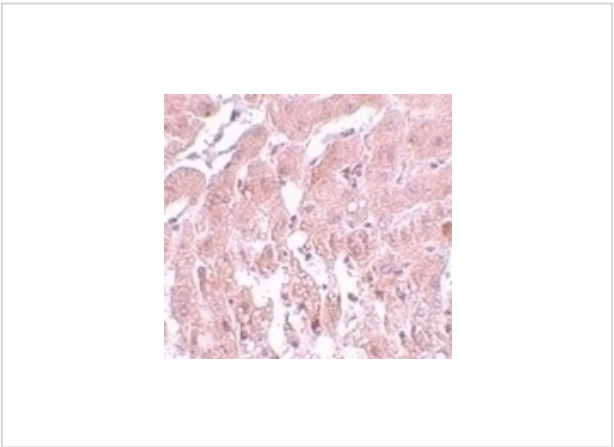
### Properties

Purification	SUMO2/3 Antibody is affinity chromatography purified via peptide column.
Clonality	Polyclonal
Isotype	IgG
Physical State	Liquid
Buffer	SUMO2/3 Antibody is supplied in PBS containing 0.02% sodium azide.
Concentration	1 mg/mL
Storage Conditions	SUMO2/3 antibody can be stored at 4°C up to one year. Antibodies should not be exposed to prolonged high temperatures.



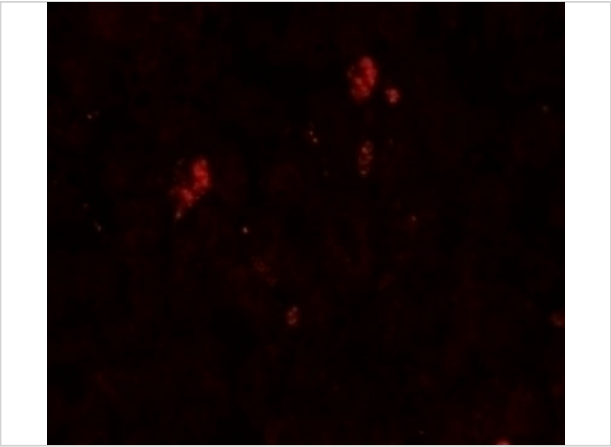
### SUMO2/3 Antibody 1

Western blot analysis of SUMO2/3 in Jurkat cell lysate with SUMO2/3 antibody at (A) 1 and (B) 2  $\mu\text{g/mL}$ .



### SUMO2/3 Antibody 2

Immunohistochemistry of SUMO2/3 in rat liver tissue with SUMO2/3 antibody at 5  $\mu\text{g/mL}$ .



### SUMO2/3 Antibody 3

Immunofluorescence of SUMO2/3 in rat liver tissue with SUMO2/3 antibody at 20  $\mu\text{g/mL}$ .

## Disclaimer

Disclaimer	Optimal dilutions/concentrations should be determined by the end user. The information provided is a guideline for product use. This product is for research use only.
------------	--

For research use only. For additional information, visit ProSci's [Terms and Conditions Page](#).