

APC5 Antibody

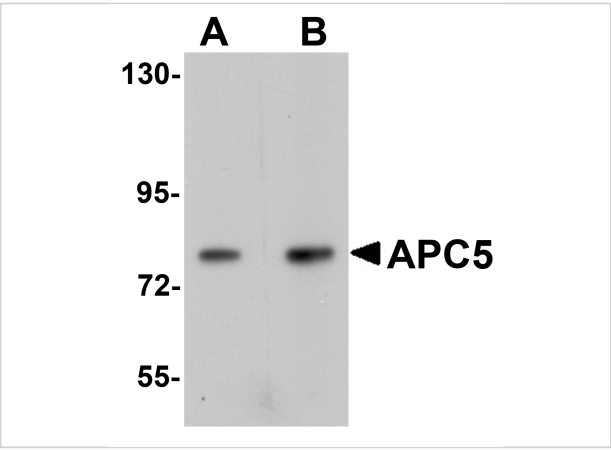
CATALOG NUMBER: 5727

Specifications

Host Species	Rabbit
Species Reactivity	Human, Mouse, Rat
Homology	Predicted species reactivity based on immunogen sequence: Chicken: (100%)
Immunogen	APC5 antibody was raised against a 17 amino acid synthetic peptide near the center of human APC5. The immunogen is located within amino acids 480 - 530 of APC5.
Conjugate	Unconjugated
Tested Applications	ELISA, IF, IHC-P, WB
User Note	Optimal dilutions for each application to be determined by the researcher.

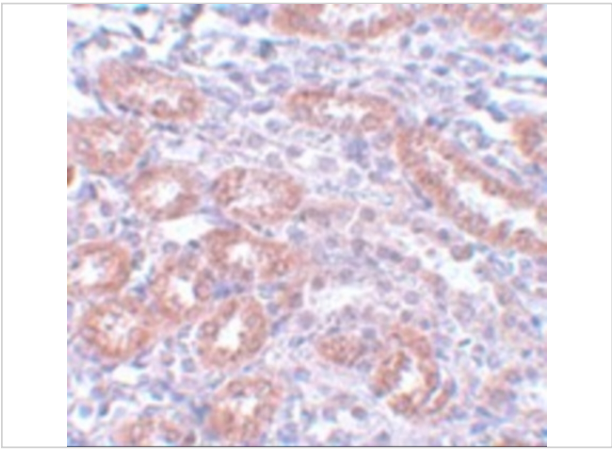
Properties

Purification	APC5 Antibody is affinity chromatography purified via peptide column.
Clonality	Polyclonal
Isotype	IgG
Physical State	Liquid
Buffer	APC5 Antibody is supplied in PBS containing 0.02% sodium azide.
Concentration	1 mg/mL
Storage Conditions	APC5 antibody can be stored at 4°C for three months and -20°C, stable for up to one year. As with all antibodies care should be taken to avoid repeated freeze thaw cycles. Antibodies should not be exposed to prolonged high temperatures.



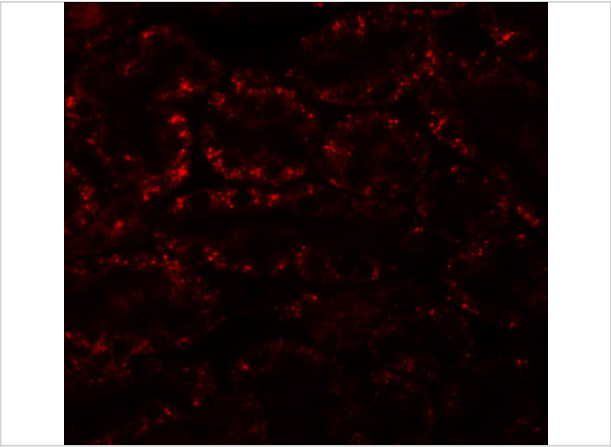
APC5 Antibody 1

Western blot analysis of APC5 in human kidney tissue lysate with APC5 antibody at (A) 1 and (B) 2 µg/mL.



APC5 Antibody 2

Immunohistochemistry of APC5 in rat kidney tissue with APC5 antibody at 5 µg/mL.



APC5 Antibody 3

Immunofluorescence of APC5 in rat kidney tissue with APC5 antibody at 20 µg/mL.

Disclaimer

Disclaimer	Optimal dilutions/concentrations should be determined by the end user. The information provided is a guideline for product use. This product is for research use only.
------------	--

For research use only. For additional information, visit ProSci's [Terms and Conditions Page](#).