

## ENC-1 Antibody

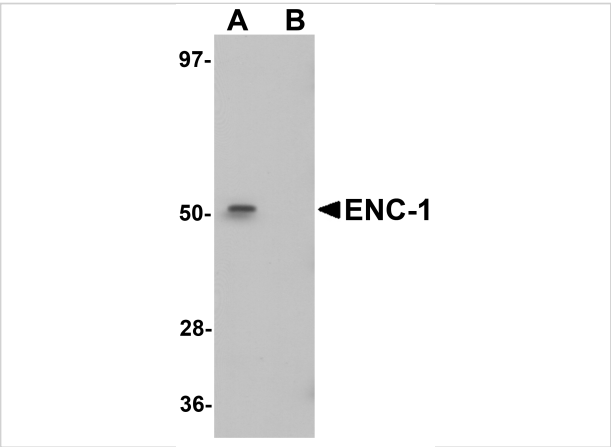
CATALOG NUMBER: 5693

### Specifications

|                     |                                                                                                                                                                        |
|---------------------|------------------------------------------------------------------------------------------------------------------------------------------------------------------------|
| Host Species        | Chicken                                                                                                                                                                |
| Species Reactivity  | Human, Mouse, Rat                                                                                                                                                      |
| Immunogen           | ENC-1 antibody was raised against a 13 amino acid synthetic peptide near the center of human ENC-1.<br>The immunogen is located within amino acids 230 - 280 of ENC-1. |
| Conjugate           | Unconjugated                                                                                                                                                           |
| Tested Applications | ELISA, IF, IHC-P, WB                                                                                                                                                   |
| User Note           | Optimal dilutions for each application to be determined by the researcher.                                                                                             |

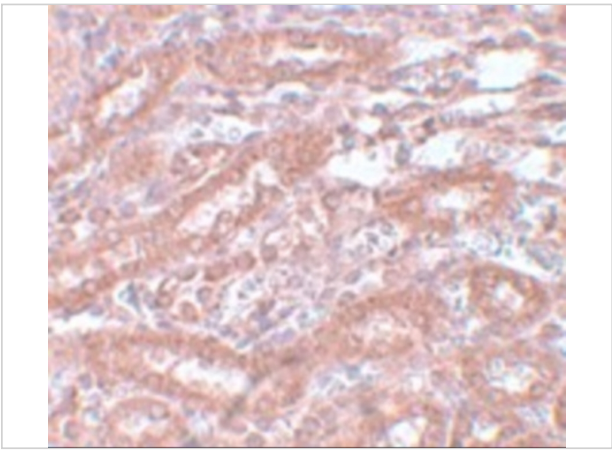
### Properties

|                    |                                                                                                                                                                                                                                                     |
|--------------------|-----------------------------------------------------------------------------------------------------------------------------------------------------------------------------------------------------------------------------------------------------|
| Purification       | ENC-1 Antibody is affinity chromatography purified via peptide column.                                                                                                                                                                              |
| Clonality          | Polyclonal                                                                                                                                                                                                                                          |
| Isotype            | IgY                                                                                                                                                                                                                                                 |
| Physical State     | Liquid                                                                                                                                                                                                                                              |
| Buffer             | ENC-1 Antibody is supplied in PBS containing 0.02% sodium azide.                                                                                                                                                                                    |
| Concentration      | 1 mg/mL                                                                                                                                                                                                                                             |
| Storage Conditions | ENC-1 antibody can be stored at 4°C for three months and -20°C, stable for up to one year.<br>As with all antibodies care should be taken to avoid repeated freeze thaw cycles.<br>Antibodies should not be exposed to prolonged high temperatures. |



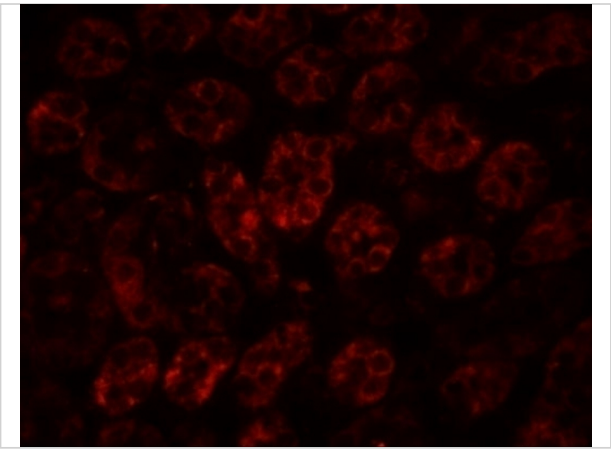
ENC-1 Antibody 1

Western blot analysis of ENC-1 in mouse kidney muscle tissue lysate with ENC-1 antibody at 1 µg/mL in (A) the absence and (B) the presence of blocking peptide.



ENC-1 Antibody 2

Immunohistochemistry of ENC-1 in rat kidney tissue with ENC-1 antibody at 5 µg/mL.



ENC-1 Antibody 3

Immunofluorescence of ENC-1 in rat kidney tissue with ENC-1 antibody at 20 µg/mL.

Disclaimer

|            |                                                                                                                                                                        |
|------------|------------------------------------------------------------------------------------------------------------------------------------------------------------------------|
| Disclaimer | Optimal dilutions/concentrations should be determined by the end user. The information provided is a guideline for product use. This product is for research use only. |
|------------|------------------------------------------------------------------------------------------------------------------------------------------------------------------------|

For research use only. For additional information, visit ProSci's [Terms and Conditions Page](#).