

## CCDC69 Antibody

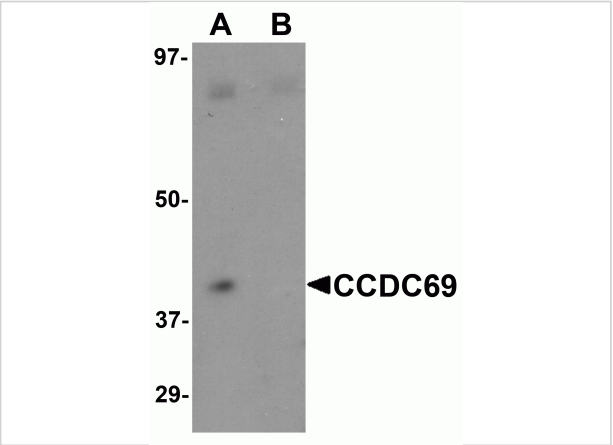
CATALOG NUMBER: 5691

### Specifications

|                     |   |
|---------------------|---|
| Host Species        | Chicken   |
| Species Reactivity  | Human, Mouse, Rat   |
| Homology            | Predicted species reactivity based on immunogen sequence: Bovine: (78%)   |
| Immunogen           | CCDC69 antibody was raised against a 16 amino acid synthetic peptide near the amino terminus of human CCDC69.<br>The immunogen is located within amino acids 150 - 200 of CCDC69. |
| Conjugate           | Unconjugated  |
| Tested Applications | ELISA, IF, IHC-P, WB  |
| User Note           | Optimal dilutions for each application to be determined by the researcher.  |

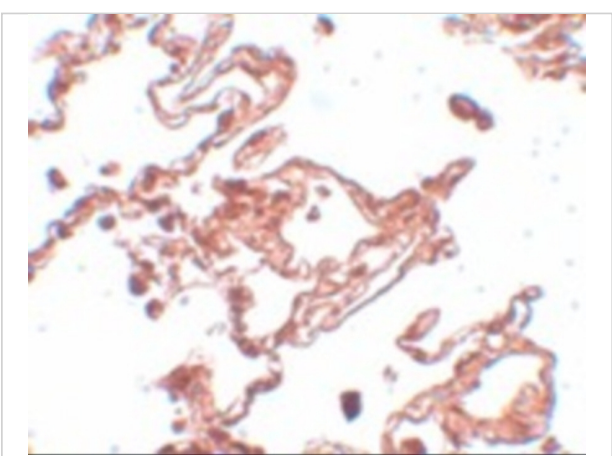
### Properties

|                    |  |
|--------------------|--|
| Purification       | CCDC69 Antibody is affinity chromatography purified via peptide column.  |
| Clonality          | Polyclonal   |
| Isotype            | IgY  |
| Physical State     | Liquid   |
| Buffer             | CCDC69 Antibody is supplied in PBS containing 0.02% sodium azide.  |
| Concentration      | 1 mg/mL  |
| Storage Conditions | CCDC69 antibody can be stored at 4°C for three months and -20°C, stable for up to one year. As with all antibodies care should be taken to avoid repeated freeze thaw cycles. Antibodies should not be exposed to prolonged high temperatures. |



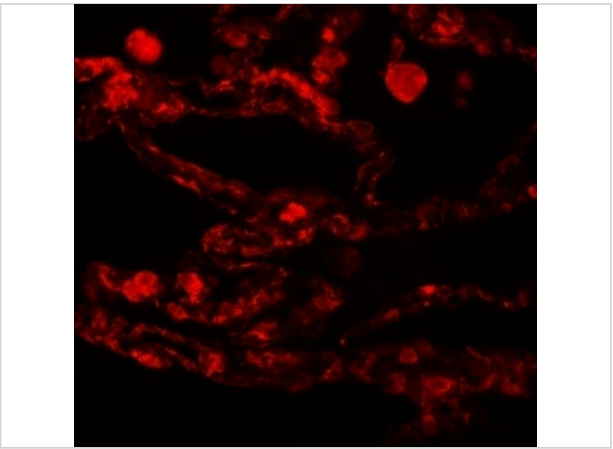
CCDC69 Antibody 1

Western blot analysis of CCDC69 in mouse lung tissue lysate with CCDC69 antibody at 1 µg/mL in (A) the absence and (B) the presence of blocking peptide.



CCDC69 Antibody 2

Immunohistochemistry of CCDC69 in human lung tissue with CCDC69 antibody at 5 µg/mL.



CCDC69 Antibody 3

Immunofluorescence of CCDC69 in human lung tissue with CCDC69 antibody at 20 µg/mL.

Disclaimer

|            |  |
|------------|--|
| Disclaimer | Optimal dilutions/concentrations should be determined by the end user. The information provided is a guideline for product use. This product is for research use only. |
|------------|--|

For research use only. For additional information, visit ProSci's [Terms and Conditions Page](#).