

## Raptor Antibody

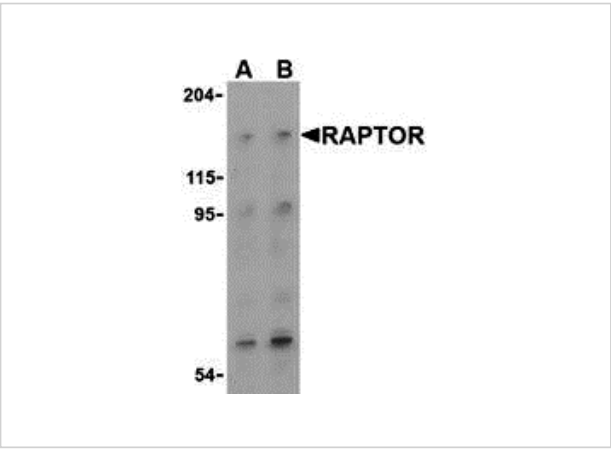
CATALOG NUMBER: 3493

### Specifications

Host Species	Rabbit
Species Reactivity	Human, Mouse
Immunogen	Raptor antibody was raised against a 15 amino acid synthetic peptide from the central region of human Raptor. The immunogen is located within amino acids 910 - 960 of Raptor.
Conjugate	Unconjugated
Tested Applications	ELISA, ICC, IF, WB
User Note	Optimal dilutions for each application to be determined by the researcher.
Specificity	Raptor has multiple isoforms that may also be recognized by antibody.

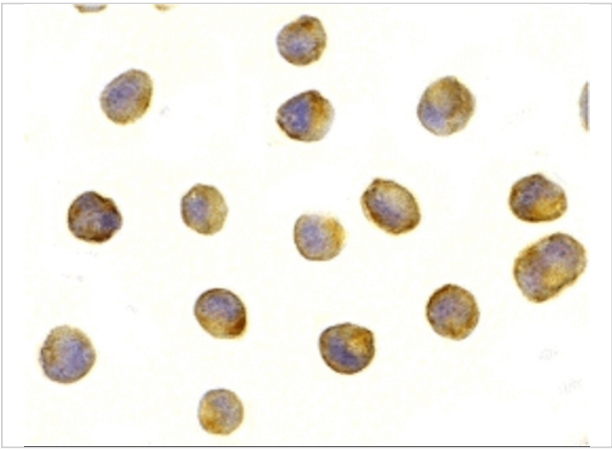
### Properties

Purification	Raptor Antibody is affinity chromatography purified via peptide column.
Clonality	Polyclonal
Isotype	IgG
Physical State	Liquid
Buffer	Raptor Antibody is supplied in PBS containing 0.02% sodium azide.
Concentration	1 mg/mL
Storage Conditions	Raptor antibody can be stored at 4°C for three months and -20°C, stable for up to one year. As with all antibodies care should be taken to avoid repeated freeze thaw cycles. Antibodies should not be exposed to prolonged high temperatures.



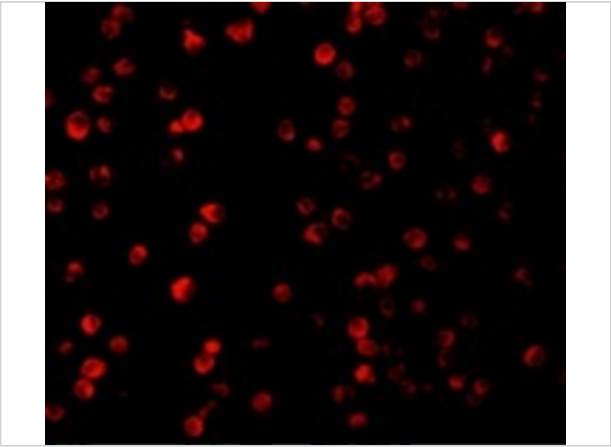
Raptor Antibody 1

Western blot analysis of Raptor in L1210 cell lysate with Raptor (IN) antibody at (A) 2 and (B) 4 µg/mL.



Raptor Antibody 2

Immunocytochemistry staining of L1210 cells using RAPTOR antibody at 1µg/mL



Raptor Antibody 3

Immunofluorescence of Raptor in L1210 cells with Raptor antibody at 10 µg/mL.

Disclaimer

Disclaimer	Optimal dilutions/concentrations should be determined by the end user. The information provided is a guideline for product use. This product is for research use only.
------------	------------------------------------------------------------------------------------------------------------------------------------------------------------------------

For research use only. For additional information, visit ProSci's [Terms and Conditions Page](#).