

## TMEM184B Antibody

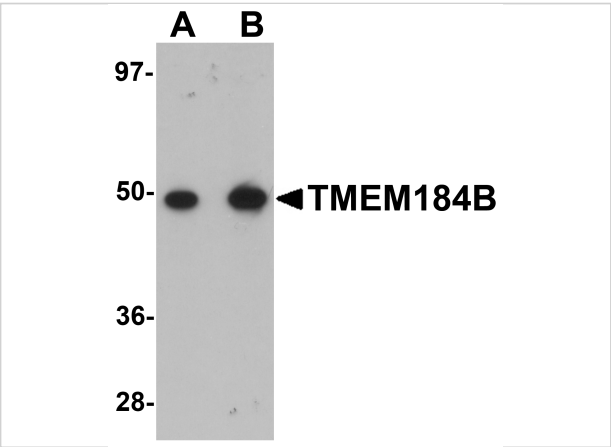
CATALOG NUMBER: 5683

### Specifications

Host Species	Rabbit
Species Reactivity	Human, Mouse, Rat
Homology	Predicted species reactivity based on immunogen sequence: Bovine: (100%)
Immunogen	TMEM184B antibody was raised against a 15 amino acid synthetic peptide near the carboxy terminus of human TMEM184B. The immunogen is located within the last 50 amino acids of TMEM184B.
Conjugate	Unconjugated
Tested Applications	ELISA, IF, IHC-P, WB
User Note	Optimal dilutions for each application to be determined by the researcher.

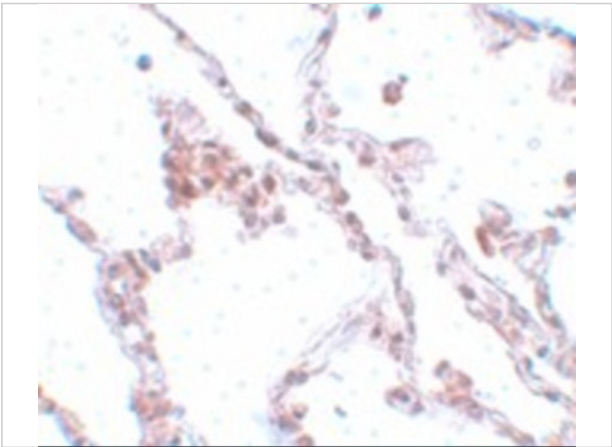
### Properties

Purification	TMEM184B Antibody is affinity chromatography purified via peptide column.
Clonality	Polyclonal
Isotype	IgG
Physical State	Liquid
Buffer	TMEM184B Antibody is supplied in PBS containing 0.02% sodium azide.
Concentration	1 mg/mL
Storage Conditions	TMEM184B antibody can be stored at 4°C for three months and -20°C, stable for up to one year. As with all antibodies care should be taken to avoid repeated freeze thaw cycles. Antibodies should not be exposed to prolonged high temperatures.



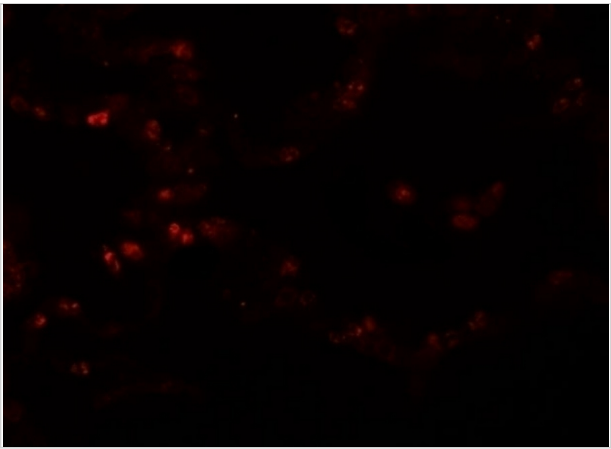
TMEM184B Antibody 1

Western blot analysis of TMEM184B in rat lung tissue lysate with TMEM184B antibody at (A) 1 and (B) 2 µg/mL.



TMEM184B Antibody 2

Immunohistochemistry of TMEM184B in human lung tissue with TMEM184B antibody at 5 µg/mL.



TMEM184B Antibody 3

Immunofluorescence of TMEM184B in human lung tissue with TMEM184B antibody at 20 µg/mL.

Disclaimer

Disclaimer	Optimal dilutions/concentrations should be determined by the end user. The information provided is a guideline for product use. This product is for research use only.
------------	--

For research use only. For additional information, visit ProSci's [Terms and Conditions Page](#).