

ZC3H12D Antibody

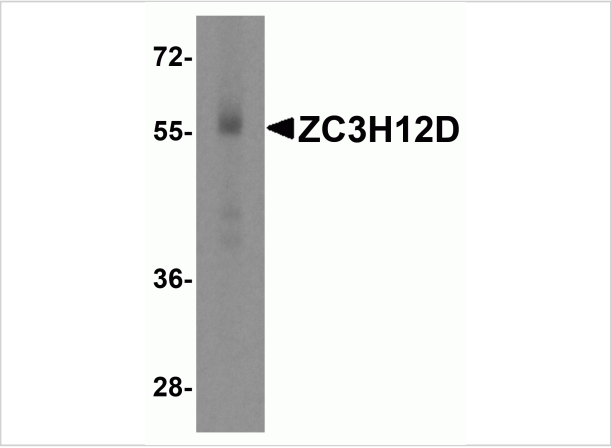
CATALOG NUMBER: 5679

Specifications

Host Species	Rabbit
Species Reactivity	Human
Immunogen	ZC3H12D antibody was raised against a 17 amino acid synthetic peptide near the carboxy terminus of human ZC3H12D. The immunogen is located within amino acids 280 - 330 of ZC3H12D.
Conjugate	Unconjugated
Tested Applications	ELISA, WB
User Note	Optimal dilutions for each application to be determined by the researcher.
Predicted Molecular Weight	Predicted: 58 kDa Observed: 57 kDa

Properties

Purification	ZC3H12D Antibody is affinity chromatography purified via peptide column.
Clonality	Polyclonal
Isotype	IgG
Physical State	Liquid
Buffer	ZC3H12D Antibody is supplied in PBS containing 0.02% sodium azide.
Concentration	1 mg/mL
Storage Conditions	ZC3H12D antibody can be stored at 4°C for three months and -20°C, stable for up to one year. As with all antibodies care should be taken to avoid repeated freeze thaw cycles. Antibodies should not be exposed to prolonged high temperatures.



ZC3H12D Antibody 1

Western blot analysis of ZC3H12D in human spleen tissue lysate with ZC3H12D antibody at 1 µg/mL.

Disclaimer

Disclaimer	Optimal dilutions/concentrations should be determined by the end user. The information provided is a guideline for product use. This product is for research use only.
-------------------	--

For research use only. For additional information, visit ProSci's [Terms and Conditions Page](#).