

Maelstrom Antibody

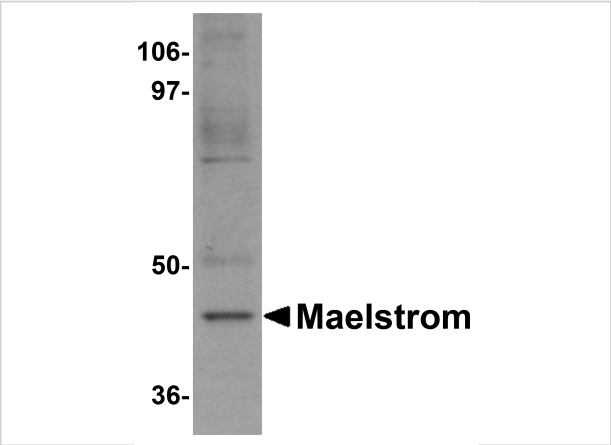
CATALOG NUMBER: 5667

Specifications

Host Species	Rabbit
Species Reactivity	Human, Mouse, Rat
Homology	Predicted species reactivity based on immunogen sequence: Bovine: (94%), Pig: (88%)
Immunogen	Maelstrom antibody was raised against a 16 amino acid synthetic peptide near the carboxy terminus of human Maelstrom. The immunogen is located within amino acids 30 - 80 of Maelstrom.
Conjugate	Unconjugated
Tested Applications	ELISA, ICC, IF, WB
User Note	Optimal dilutions for each application to be determined by the researcher.

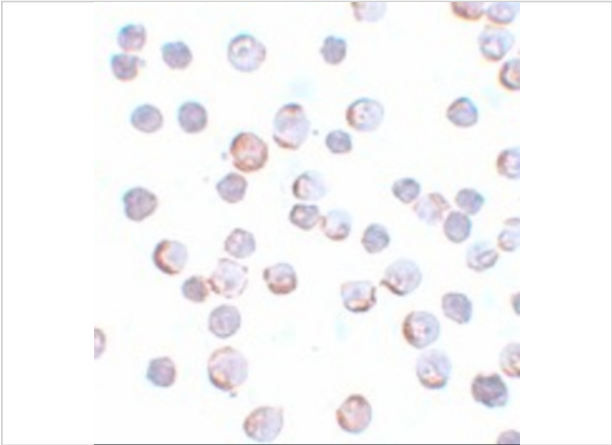
Properties

Purification	Maelstrom Antibody is affinity chromatography purified via peptide column.
Clonality	Polyclonal
Isotype	IgG
Physical State	Liquid
Buffer	Maelstrom Antibody is supplied in PBS containing 0.02% sodium azide.
Concentration	1 mg/mL
Storage Conditions	Maelstrom antibody can be stored at 4°C for three months and -20°C, stable for up to one year. As with all antibodies care should be taken to avoid repeated freeze thaw cycles. Antibodies should not be exposed to prolonged high temperatures.



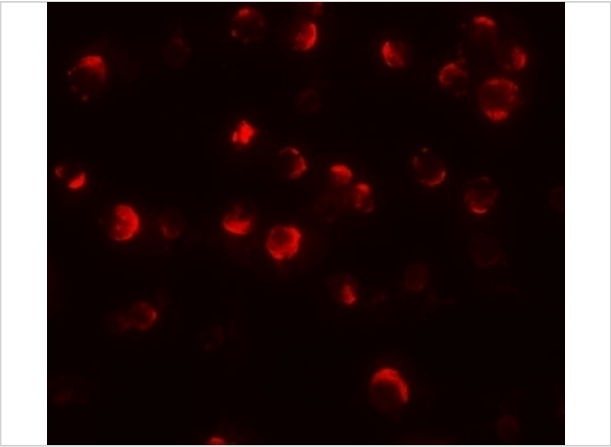
Maelstrom Antibody 1

Western blot analysis of Maelstrom in HeLa cell lysate with Maelstrom antibody at 1 µg/mL.



Maelstrom Antibody 2

Immunocytochemistry of Maelstrom in HeLa cells with Maelstrom antibody at 5 µg/mL.



Maelstrom Antibody 3

Immunofluorescence of Maelstrom in HeLa cells with Maelstrom antibody at 20 µg/mL.

Disclaimer

Disclaimer	Optimal dilutions/concentrations should be determined by the end user. The information provided is a guideline for product use. This product is for research use only.
------------	--

For research use only. For additional information, visit ProSci's [Terms and Conditions Page](#).