



ProSci Incorporated
12170 Flint Place
Poway, CA 92064, USA
prosci-inc.com

P: +1 (888) 513-9525
Local: +1 (858) 513-2638
Fax: +1 (858) 513-2692

customercare@prosci-inc.com
techsupport@prosci-inc.com

LYRM2 Antibody

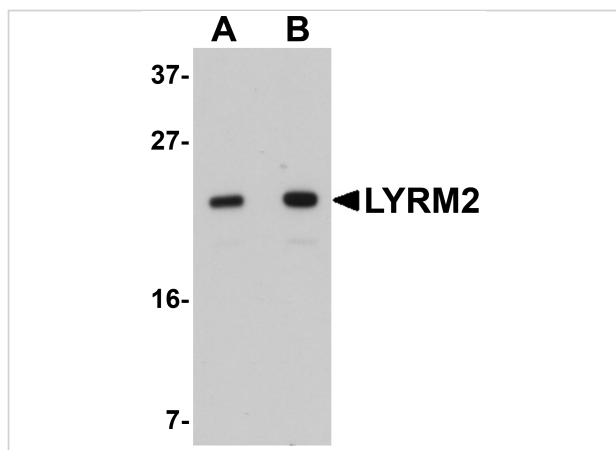
CATALOG NUMBER: 5661

Specifications

Host Species	Rabbit
Species Reactivity	Human, Mouse, Rat
Homology	Predicted species reactivity based on immunogen sequence: Bovine: (94%)
Immunogen	LYRM2 antibody was raised against a 16 amino acid synthetic peptide near the carboxy terminus of human LYRM2. The immunogen is located within the last 50 amino acids of LYRM2.
Conjugate	Unconjugated
Tested Applications	ELISA, ICC, IF, WB
User Note	Optimal dilutions for each application to be determined by the researcher.

Properties

Purification	LYRM2 Antibody is affinity chromatography purified via peptide column.
Clonality	Polyclonal
Isotype	IgG
Physical State	Liquid
Buffer	LYRM2 Antibody is supplied in PBS containing 0.02% sodium azide.
Concentration	1 mg/mL
Storage Conditions	LYRM2 antibody can be stored at 4°C for three months and -20°C, stable for up to one year. As with all antibodies care should be taken to avoid repeated freeze thaw cycles. Antibodies should not be exposed to prolonged high temperatures.



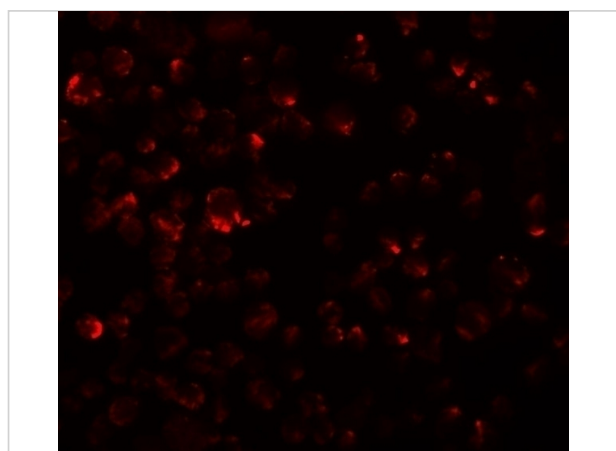
LYRM2 Antibody 1

Western blot analysis of LYRM2 in A549 cell lysate with LYRM2 antibody at (A) 1 and (B) 2 $\mu\text{g/mL}$.



LYRM2 Antibody 2

Immunocytochemistry of LYRM2 in A549 cells with LYRM2 antibody at 20 $\mu\text{g/mL}$.



LYRM2 Antibody 3

Immunofluorescence of LYRM2 in A549 cells with LYRM2 antibody at 20 $\mu\text{g/mL}$.

Disclaimer

Disclaimer

Optimal dilutions/concentrations should be determined by the end user. The information provided is a guideline for product use. This product is for research use only.

For research use only. For additional information, visit ProSci's [Terms and Conditions Page](#).