

BCAS1 Antibody

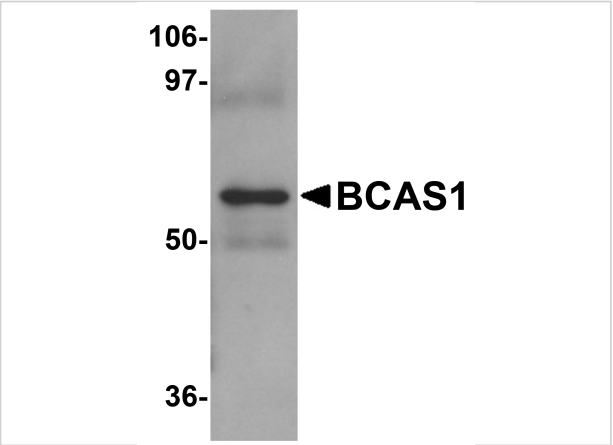
CATALOG NUMBER: 5625

Specifications

Host Species	Rabbit
Species Reactivity	Human
Homology	Predicted species reactivity based on immunogen sequence: Rat: (75%)
Immunogen	BCAS1 antibody was raised against a 16 amino acid synthetic peptide near the carboxy terminus of human BCAS1. The immunogen is located within amino acids 460 - 510 of BCAS1.
Conjugate	Unconjugated
Tested Applications	ELISA, IF, IHC-P, WB
User Note	Optimal dilutions for each application to be determined by the researcher.

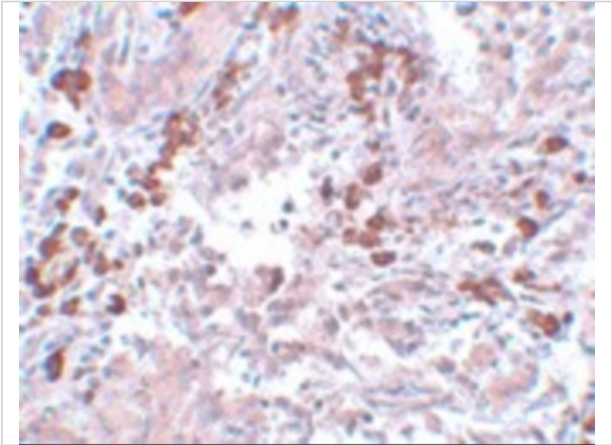
Properties

Purification	BCAS1 Antibody is affinity chromatography purified via peptide column.
Clonality	Polyclonal
Isotype	IgG
Physical State	Liquid
Buffer	BCAS1 Antibody is supplied in PBS containing 0.02% sodium azide.
Concentration	1 mg/mL
Storage Conditions	BCAS1 antibody can be stored at 4°C for three months and -20°C, stable for up to one year. As with all antibodies care should be taken to avoid repeated freeze thaw cycles. Antibodies should not be exposed to prolonged high temperatures.



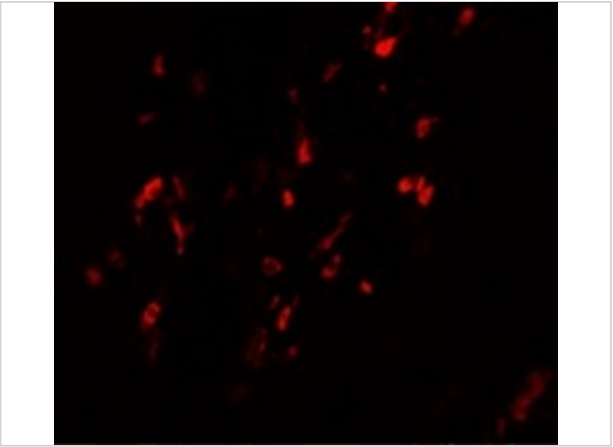
BCAS1 Antibody 1

Western blot analysis of BCAS1 in human lung tissue lysate with BCAS1 antibody at 1 µg/mL.



BCAS1 Antibody 2

Immunohistochemistry of BCAS1 in human breast carcinoma with BCAS1 antibody at 5 µg/mL.



BCAS1 Antibody 3

Immunofluorescence of BCAS1 in Human Breast Carcinoma cells with BCAS1 antibody at 20 µg/mL.

Disclaimer

Disclaimer	Optimal dilutions/concentrations should be determined by the end user. The information provided is a guideline for product use. This product is for research use only.
-------------------	--

For research use only. For additional information, visit ProSci's [Terms and Conditions Page](#).