

## LZTR2 Antibody

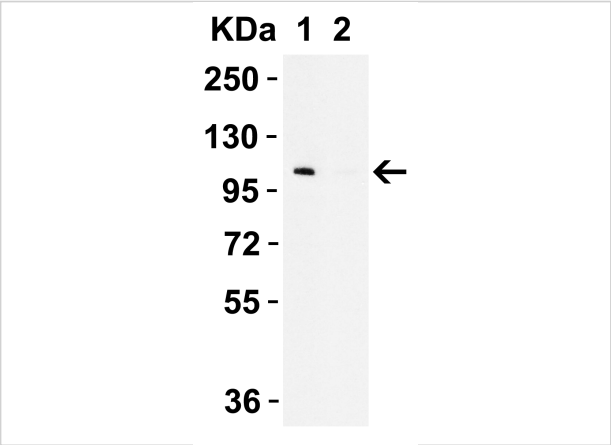
CATALOG NUMBER: 5623

### Specifications

Host Species	Rabbit
Species Reactivity	Human, Mouse, Rat
Homology	Predicted species reactivity based on immunogen sequence: Bovine: (100%), Rabbit: (94%)
Immunogen	LZTR2 antibody was raised against an 18 amino acid synthetic peptide near the carboxy terminus of human LZTR2. The immunogen is located within the last 50 amino acids of LZTR2.
Conjugate	Unconjugated
Tested Applications	ELISA, IF, IHC-P, WB
User Note	Optimal dilutions for each application to be determined by the researcher.

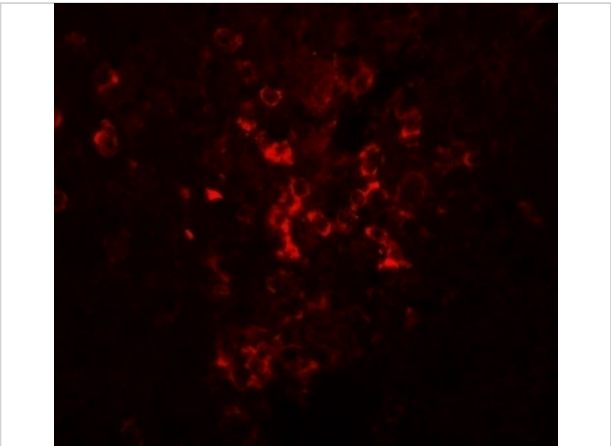
### Properties

Purification	LZTR2 Antibody is affinity chromatography purified via peptide column.
Clonality	Polyclonal
Isotype	IgG
Physical State	Liquid
Buffer	LZTR2 Antibody is supplied in PBS containing 0.02% sodium azide.
Concentration	1 mg/mL
Storage Conditions	LZTR2 antibody can be stored at 4°C for three months and -20°C, stable for up to one year. As with all antibodies care should be taken to avoid repeated freeze thaw cycles. Antibodies should not be exposed to prolonged high temperatures.



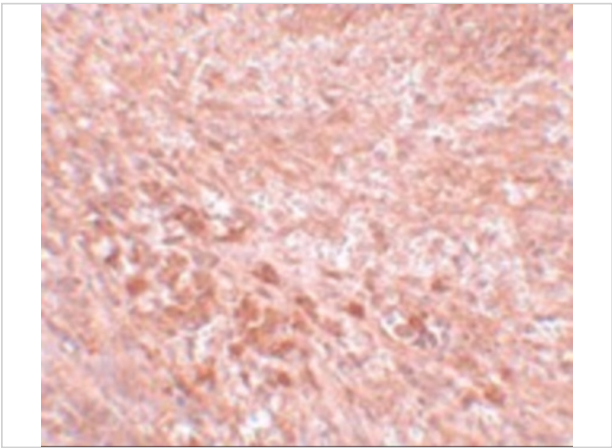
LZTR2 Antibody 1

**WB Validation in 293 Cells**  
Loading: 10 µg of cell lysate Antibodies: LZTR2 5623-1001, 0.5 µg/ml, 1 h incubation at RT in 5% NFDm/TBST.Secondary: Goat Anti-Rabbit IgG HRP con...



LZTR2 Antibody 3

Immunofluorescence of LZTR2 in mouse kidney tissue with LZTR2 antibody at 20 µg/mL.



LZTR2 Antibody 2

Immunohistochemistry of LZTR2 in mouse kidney tissue with LZTR2 antibody at 5 µg/mL.

Disclaimer

Disclaimer	Optimal dilutions/concentrations should be determined by the end user. The information provided is a guideline for product use. This product is for research use only.
------------	--

For research use only. For additional information, visit ProSci's [Terms and Conditions Page](#).