

## Mcl-1 Antibody

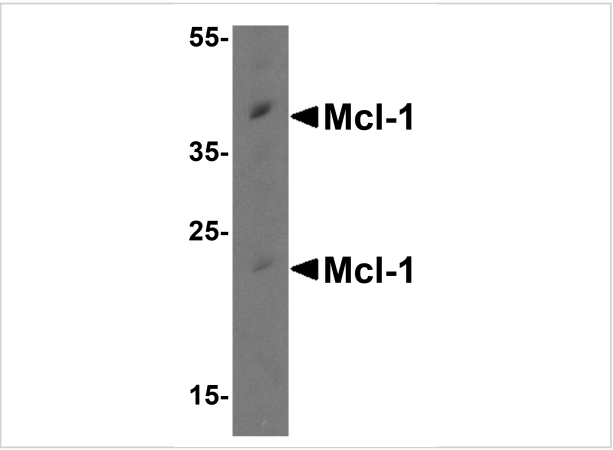
CATALOG NUMBER: 3477

### Specifications

<b>Host Species</b>	Rabbit
<b>Species Reactivity</b>	Human, Mouse, Rat
<b>Immunogen</b>	Mcl-1 antibody was raised against a peptide corresponding to 16 amino acids near the carboxy terminus of human Mcl-1. The immunogen is located within amino acids 220 - 270 of Mcl-1.
<b>Conjugate</b>	Unconjugated
<b>Tested Applications</b>	ELISA, ICC, IF, WB
<b>User Note</b>	Optimal dilutions for each application to be determined by the researcher.
<b>Specificity</b>	This Mcl-1 antibody detects isoforms Mcl-1L and Mcl-1ES.
<b>Predicted Molecular Weight</b>	Predicted: 22, 39 kDa Observed: 39 kDa

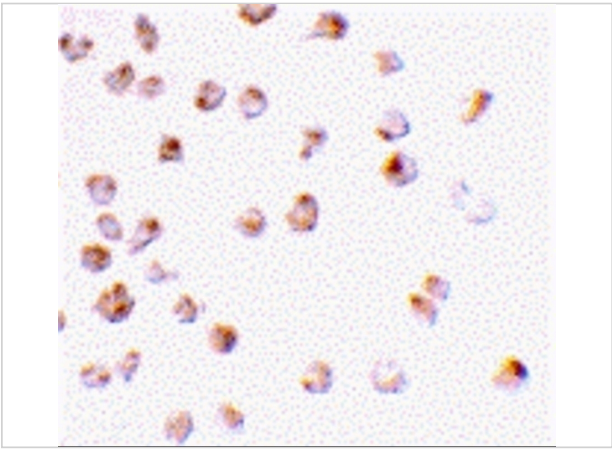
### Properties

<b>Purification</b>	Mcl-1 Antibody is affinity chromatography purified via peptide column.
<b>Clonality</b>	Polyclonal
<b>Isotype</b>	IgG
<b>Physical State</b>	Liquid
<b>Buffer</b>	Mcl-1 Antibody is supplied in PBS containing 0.02% sodium azide.
<b>Concentration</b>	1 mg/mL
<b>Storage Conditions</b>	Mcl-1 antibody can be stored at 4°C for three months and -20°C, stable for up to one year. As with all antibodies care should be taken to avoid repeated freeze thaw cycles. Antibodies should not be exposed to prolonged high temperatures.



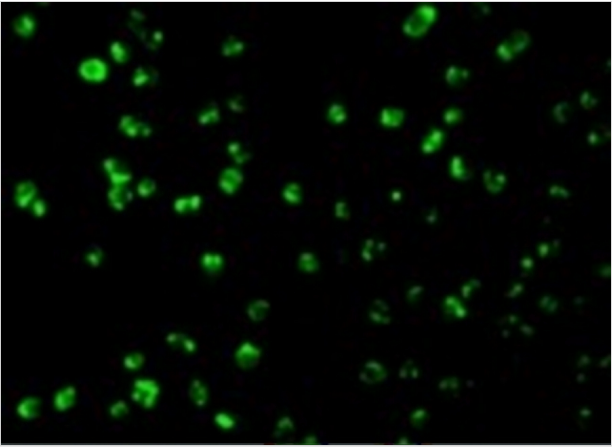
Mcl-1 Antibody 1

Western blot analysis of Mcl-1 in Raji cell lysate with Mcl-1 antibody at 0.5 µg/mL.



Mcl-1 Antibody 2

Immunocytochemistry staining of Raji cells using Mcl-1 antibody at 2 µg/mL.



Mcl-1 Antibody 3

Immunofluorescence of Mcl-1 in Raji cells with Mcl-1 antibody at 10 µg/mL.

Disclaimer

Disclaimer	Optimal dilutions/concentrations should be determined by the end user. The information provided is a guideline for product use. This product is for research use only.
------------	--

For research use only. For additional information, visit ProSci's [Terms and Conditions Page](#).