

## Lin28 Antibody

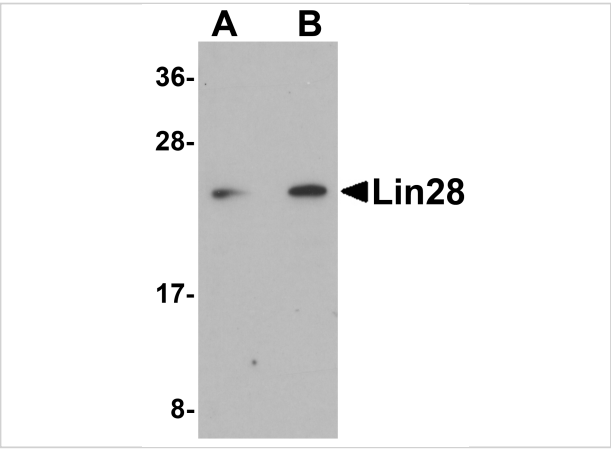
CATALOG NUMBER: 5605

### Specifications

Host Species	Rabbit
Species Reactivity	Human
Homology	Predicted species reactivity based on immunogen sequence: Mouse: (87%), Chicken: (79%)
Immunogen	Lin28 antibody was raised against a 15 amino acid synthetic peptide near the carboxy terminus of human Lin28. The immunogen is located within the last 50 amino acids of Lin28.
Conjugate	Unconjugated
Tested Applications	ELISA, IF, IHC-P, WB
User Note	Optimal dilutions for each application to be determined by the researcher.

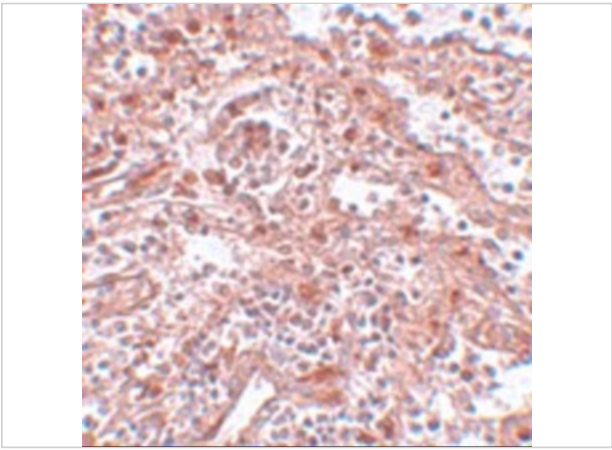
### Properties

Purification	Lin28 Antibody is affinity chromatography purified via peptide column.
Clonality	Polyclonal
Isotype	IgG
Physical State	Liquid
Buffer	Lin28 Antibody is supplied in PBS containing 0.02% sodium azide.
Concentration	1 mg/mL
Storage Conditions	Lin28 antibody can be stored at 4°C up to one year. Antibodies should not be exposed to prolonged high temperatures.



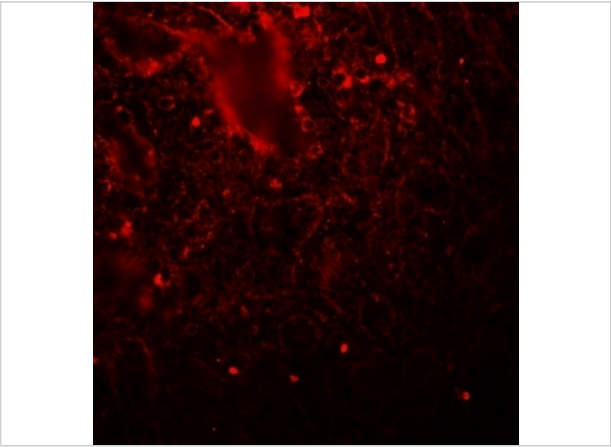
Lin28 Antibody 1

Western blot analysis of Lin28 in Raji cell lysate with Lin28 antibody at (A) 1 and (B) 2 µg/mL.



Lin28 Antibody 2

Immunohistochemistry of KLF4 in human spleen tissue with KLF4 antibody at 5 µg/mL.



Lin28 Antibody 3

Immunofluorescence of LIN28 in human spleen tissue with LIN28 antibody at 20 µg/mL.

Disclaimer

Disclaimer	Optimal dilutions/concentrations should be determined by the end user. The information provided is a guideline for product use. This product is for research use only.
------------	--

For research use only. For additional information, visit ProSci's [Terms and Conditions Page](#).