

SYNGR4 Antibody

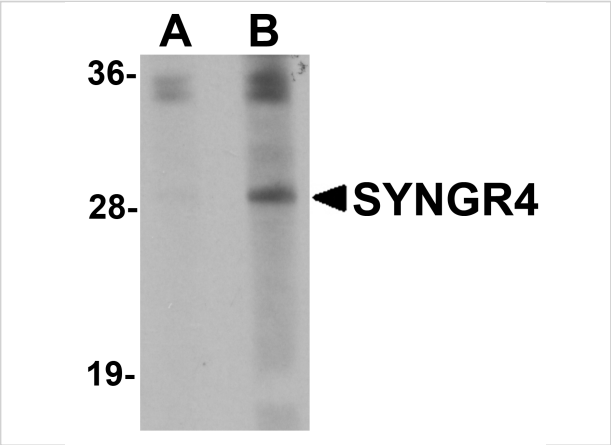
CATALOG NUMBER: 5569

Specifications

Host Species	Rabbit
Species Reactivity	Human, Mouse, Rat
Immunogen	SYNGR4 antibody was raised against a 14 amino acid synthetic peptide from near the amino terminus of human SYNGR4. The immunogen is located within amino acids 30 - 80 of SYNGR4.
Conjugate	Unconjugated
Tested Applications	ELISA, IF, IHC-P, WB
User Note	Optimal dilutions for each application to be determined by the researcher.

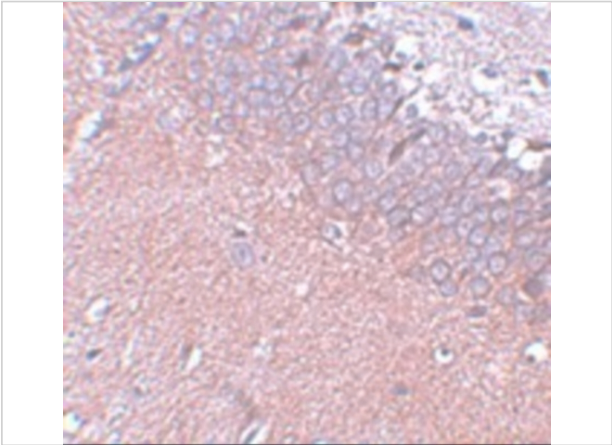
Properties

Purification	SYNGR4 Antibody is affinity chromatography purified via peptide column.
Clonality	Polyclonal
Isotype	IgG
Physical State	Liquid
Buffer	SYNGR4 Antibody is supplied in PBS containing 0.02% sodium azide.
Concentration	1 mg/mL
Storage Conditions	SYNGR4 antibody can be stored at 4°C for three months and -20°C, stable for up to one year. As with all antibodies care should be taken to avoid repeated freeze thaw cycles. Antibodies should not be exposed to prolonged high temperatures.



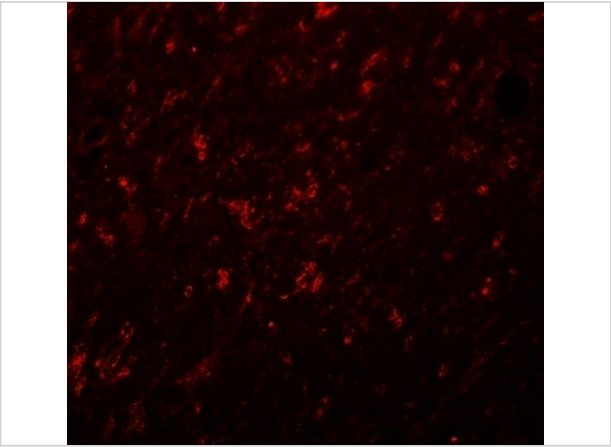
SYNGR4 Antibody 1

Western blot analysis of SYNGR4 in K562 cell lysate with SYNGR4 antibody at (A) 1 and (B) 2 $\mu\text{g/mL}$.



SYNGR4 Antibody 2

Immunohistochemistry of SYNGR4 in rat brain tissue with SYNGR4 antibody at 5 $\mu\text{g/mL}$.



SYNGR4 Antibody 3

Immunofluorescence of SYNGR4 in rat brain tissue with SYNGR4 antibody at 20 $\mu\text{g/mL}$.

Disclaimer

Disclaimer	Optimal dilutions/concentrations should be determined by the end user. The information provided is a guideline for product use. This product is for research use only.
-------------------	--

For research use only. For additional information, visit ProSci's [Terms and Conditions Page](#).