



ProSci Incorporated  
12170 Flint Place  
Poway, CA 92064, USA  
prosci-inc.com

P: +1 (888) 513-9525  
Local: +1 (858) 513-2638  
Fax: +1 (858) 513-2692

customercare@prosci-inc.com  
techsupport@prosci-inc.com

# SYNGR3 Antibody

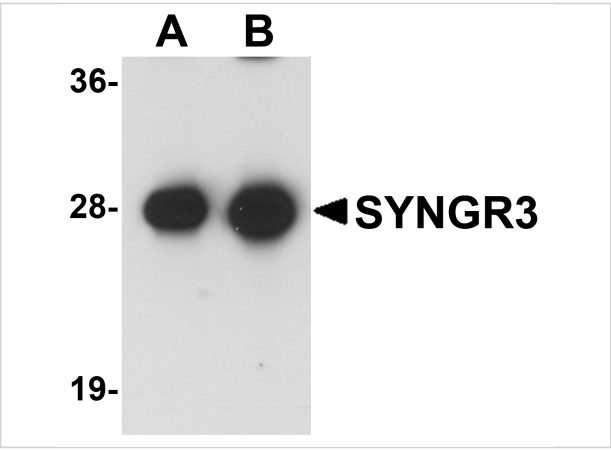
CATALOG NUMBER: 5567

## Specifications

Host Species	Rabbit
Species Reactivity	Human, Mouse, Rat
Homology	Predicted species reactivity based on immunogen sequence: Bovine: (89%)
Immunogen	SYNGR3 antibody was raised against a 19 amino acid synthetic peptide from near the carboxy terminus of human SYNGR3. The immunogen is located within the last 50 amino acids of SYNGR3.
Conjugate	Unconjugated
Tested Applications	ELISA, IF, IHC-P, WB
User Note	Optimal dilutions for each application to be determined by the researcher.

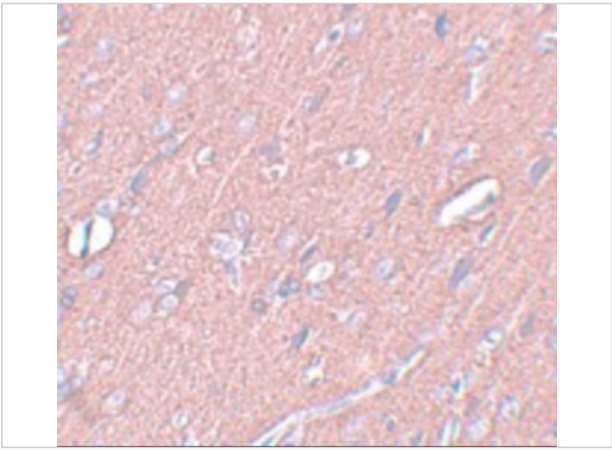
## Properties

Purification	SYNGR3 Antibody is affinity chromatography purified via peptide column.
Clonality	Polyclonal
Isotype	IgG
Physical State	Liquid
Buffer	SYNGR3 Antibody is supplied in PBS containing 0.02% sodium azide.
Concentration	1 mg/mL
Storage Conditions	SYNGR3 antibody can be stored at 4°C up to one year. Antibodies should not be exposed to prolonged high temperatures.



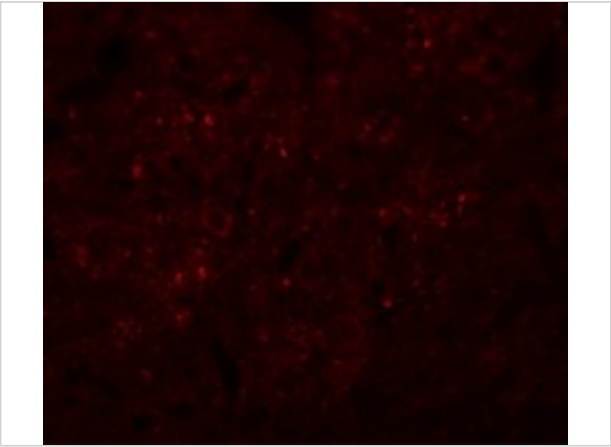
**SYNGR3 Antibody 1**

Western blot analysis of SYNGR3 in mouse brain tissue lysate with SYNGR3 antibody at (A) 1 and (B) 2  $\mu\text{g/mL}$ .



**SYNGR3 Antibody 2**

Immunohistochemistry of SYNGR3 in rat brain tissue with SYNGR3 antibody at 2.5  $\mu\text{g/mL}$ .



**SYNGR3 Antibody 3**

Immunofluorescence of SYNGR3 in Rat Brain cells with SYNGR3 antibody at 20  $\mu\text{g/mL}$ .

**Disclaimer**

<b>Disclaimer</b>	Optimal dilutions/concentrations should be determined by the end user. The information provided is a guideline for product use. This product is for research use only.
-------------------	--

For research use only. For additional information, visit ProSci's [Terms and Conditions Page](#).