



ProSci Incorporated
12170 Flint Place
Poway, CA 92064, USA
prosci-inc.com

P: +1 (888) 513-9525
Local: +1 (858) 513-2638
Fax: +1 (858) 513-2692

customercare@prosci-inc.com
techsupport@prosci-inc.com

PRDM16 Antibody

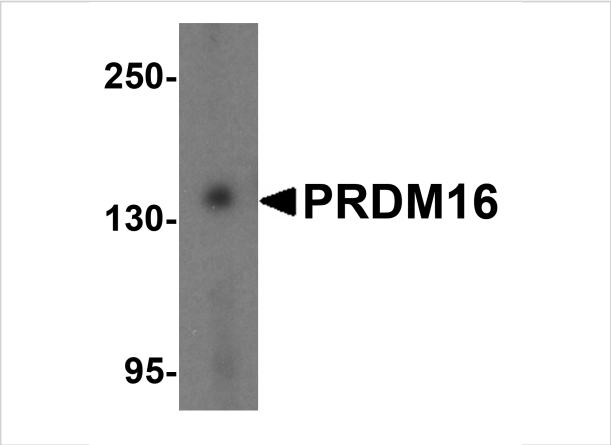
CATALOG NUMBER: 5555

Specifications

Host Species	Rabbit
Species Reactivity	Human, Mouse
Immunogen	PRDM16 antibody was raised against a 17 amino acid synthetic peptide from near the carboxy terminus of human PRDM16. The immunogen is located within amino acids 1120 - 1170 of PRDM16.
Conjugate	Unconjugated
Tested Applications	ELISA, IF, IHC-P, WB
User Note	Optimal dilutions for each application to be determined by the researcher.
Predicted Molecular Weight	Predicted: 109, 120, 140 kDa Observed: 140 kDa

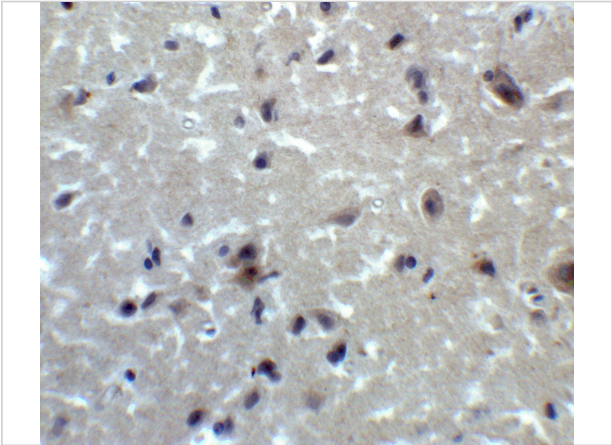
Properties

Purification	PRDM16 Antibody is affinity chromatography purified via peptide column.
Clonality	Polyclonal
Isotype	IgG
Physical State	Liquid
Buffer	PRDM16 Antibody is supplied in PBS containing 0.02% sodium azide.
Concentration	1 mg/mL
Storage Conditions	PRDM16 antibody can be stored at 4°C up to one year. Antibodies should not be exposed to prolonged high temperatures.



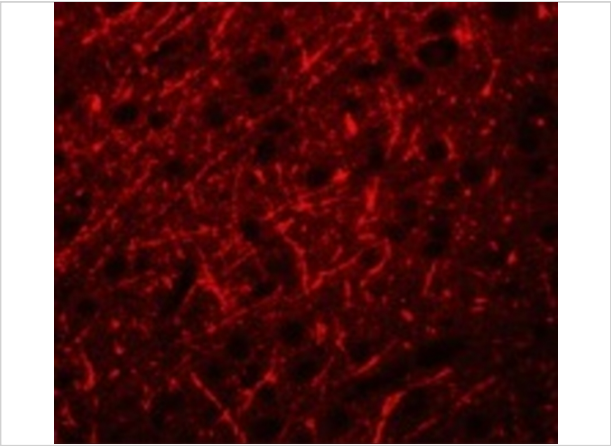
PRDM16 Antibody 1

Western blot analysis of PRDM16 in K562 cell lysate with PRDM16 antibody at 1 µg/mL.



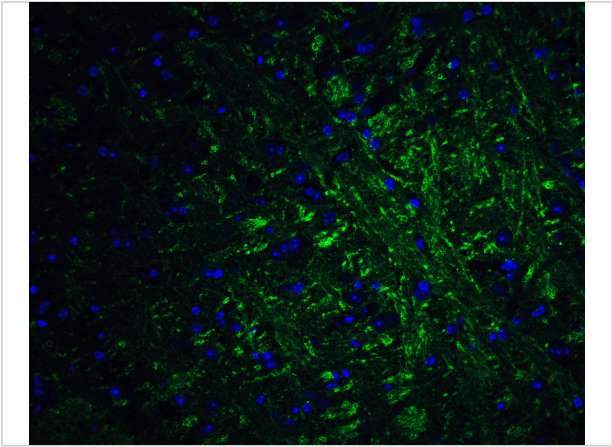
PRDM16 Antibody 2

Immunohistochemistry of PRDM16 in human brain tissue with PRDM16 antibody at 2 µg/mL.



PRDM16 Antibody 3

Immunofluorescence of PRDM16 in Human Brain cells with PRDM16 antibody at 20 µg/mL.



PRDM16 Antibody 4

Immunofluorescence of PRDM16 in mouse brain tissue with PRDM16 antibody at 20 µg/mL.

Green: PRDM16 Antibody (5555)
Blue: DAPI staining

Disclaimer

Disclaimer	Optimal dilutions/concentrations should be determined by the end user. The information provided is a guideline for product use. This product is for research use only.
-------------------	--

For research use only. For additional information, visit ProSci's [Terms and Conditions Page](#).