

## Girdin Antibody

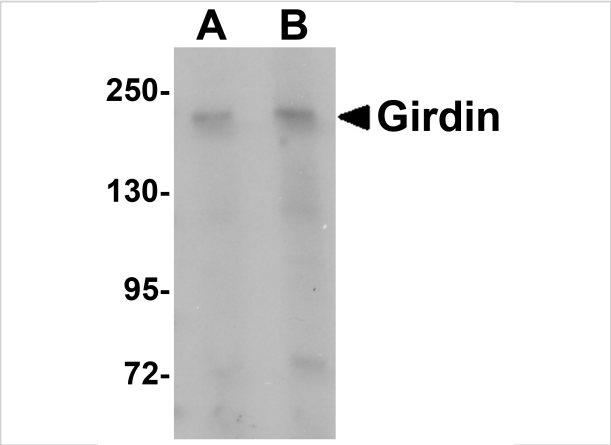
CATALOG NUMBER: 5545

### Specifications

Host Species	Rabbit
Species Reactivity	Human, Mouse, Rat
Immunogen	Girdin antibody was raised against a 16 amino acid synthetic peptide from near the carboxy terminus human Girdin. The immunogen is located within the last 50 amino acids of Girdin.
Conjugate	Unconjugated
Tested Applications	ELISA, IF, WB
User Note	Optimal dilutions for each application to be determined by the researcher.

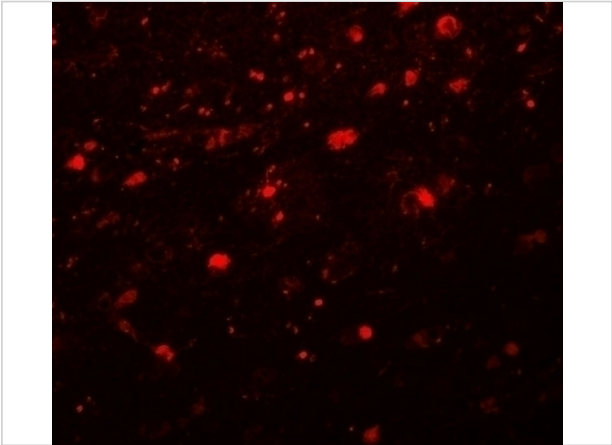
### Properties

Purification	Girdin Antibody is affinity chromatography purified via peptide column.
Clonality	Polyclonal
Isotype	IgG
Physical State	Liquid
Buffer	Girdin Antibody is supplied in PBS containing 0.02% sodium azide.
Concentration	1 mg/mL
Storage Conditions	Girdin antibody can be stored at 4°C for three months and -20°C, stable for up to one year. As with all antibodies care should be taken to avoid repeated freeze thaw cycles. Antibodies should not be exposed to prolonged high temperatures.



Girdin Antibody 1

Western blot analysis of Girdin in rat brain tissue lysate with Girdin antibody at (A) 1 and (B) 2 µg/mL.



Girdin Antibody 2

Immunofluorescence of Girdin in human brain tissue with Girdin antibody at 20 µg/mL.

Disclaimer

Disclaimer	Optimal dilutions/concentrations should be determined by the end user. The information provided is a guideline for product use. This product is for research use only.
------------	--

For research use only. For additional information, visit ProSci's [Terms and Conditions Page](#).