

FAM212A Antibody

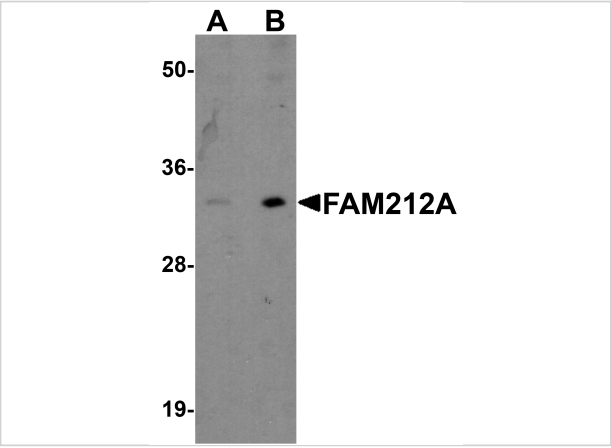
CATALOG NUMBER: 5531

Specifications

Host Species	Rabbit
Species Reactivity	Human, Mouse
Immunogen	FAM212A antibody was raised against a 15 amino acid peptide near the carboxy terminus of human FAM212A. The immunogen is located within the last 50 amino acids of FAM212A.
Conjugate	Unconjugated
Tested Applications	ELISA, WB
User Note	Optimal dilutions for each application to be determined by the researcher.
Specificity	FAM212A antibody is human and mouse . At least two isoforms of FAM212A are known to exist; this antibody will recognize both isoforms.
Predicted Molecular Weight	Predicted: 32 kDa Observed: 33 kDa

Properties

Purification	FAM212A antibody is affinity chromatography purified via peptide column.
Clonality	Polyclonal
Isotype	IgG
Physical State	Liquid
Buffer	FAM212A antibody is supplied in PBS containing 0.02% sodium azide.
Concentration	1 mg/mL
Storage Conditions	FAM212A antibody can be stored at 4°C for three months and -20°C, stable for up to one year.



FAM212A Antibody 1

Western blot analysis of FAM212A in EL4 cell lysate with FAM212A antibody at (A) 1 and (B) 2 µg/ml.

Disclaimer

Disclaimer	Optimal dilutions/concentrations should be determined by the end user. The information provided is a guideline for product use. This product is for research use only.
------------	--

For research use only. For additional information, visit ProSci's [Terms and Conditions Page](#).