

TMEM38A Antibody

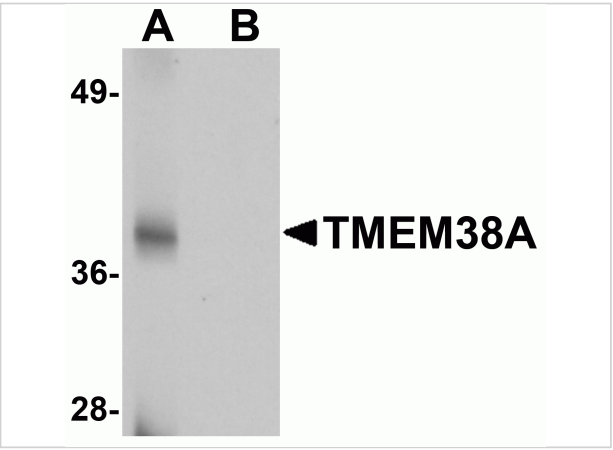
CATALOG NUMBER: 5521

Specifications

Host Species	Rabbit
Species Reactivity	Human, Mouse, Rat
Homology	Predicted species reactivity based on immunogen sequence: Rabbit: (94%), Bovine: (94%), Chicken: (76%)
Immunogen	TMEM38A antibody was raised against a 17 amino acid synthetic peptide from near the carboxy terminus of human TMEM38A. The immunogen is located within the last 50 amino acids of TMEM38A.
Conjugate	Unconjugated
Tested Applications	ELISA, IF, WB
User Note	Optimal dilutions for each application to be determined by the researcher.

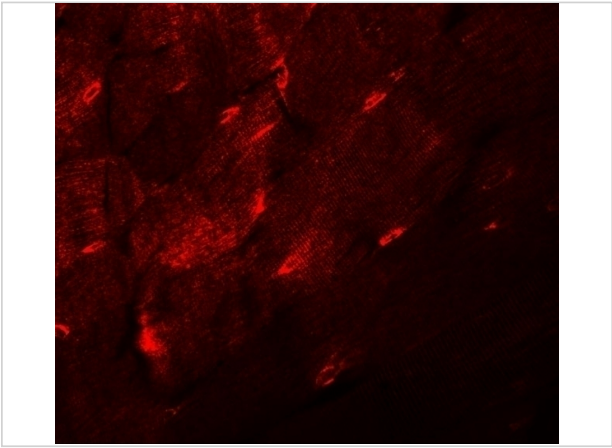
Properties

Purification	TMEM38A Antibody is affinity chromatography purified via peptide column.
Clonality	Polyclonal
Isotype	IgG
Physical State	Liquid
Buffer	TMEM38A Antibody is supplied in PBS containing 0.02% sodium azide.
Concentration	1 mg/mL
Storage Conditions	TMEM38A antibody can be stored at 4°C for three months and -20°C, stable for up to one year. As with all antibodies care should be taken to avoid repeated freeze thaw cycles. Antibodies should not be exposed to prolonged high temperatures.



TMEM38A Antibody 1

Western blot analysis of TMEM38A in rat skeletal muscle tissue lysate with TMEM38A antibody at 1 µg/mL in (A) the absence and (B) the presence of blocking peptide.



TMEM38A Antibody 2

Immunofluorescence of TMEM38A in mouse skeletal muscle tissue with TMEM38A antibody at 20 µg/mL.

Disclaimer

Disclaimer	Optimal dilutions/concentrations should be determined by the end user. The information provided is a guideline for product use. This product is for research use only.
------------	--

For research use only. For additional information, visit ProSci's [Terms and Conditions Page](#).