

## CCDC47 Antibody

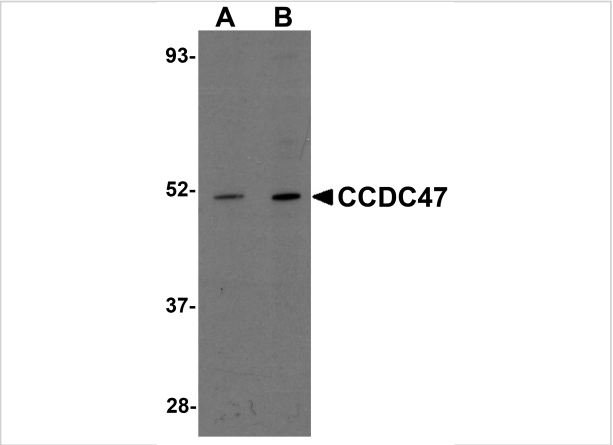
CATALOG NUMBER: 5511

### Specifications

Host Species	Rabbit
Species Reactivity	Human, Mouse
Homology	Predicted species reactivity based on immunogen sequence: Bovine: (100%), Rat: (100%)
Immunogen	CCDC47 antibody was raised against a 16 amino acid synthetic peptide from near the carboxy terminus of human CCDC47. The immunogen is located within amino acids 350 - 400 of CCDC47.
Conjugate	Unconjugated
Tested Applications	ELISA, IF, IHC-P, WB
User Note	Optimal dilutions for each application to be determined by the researcher.

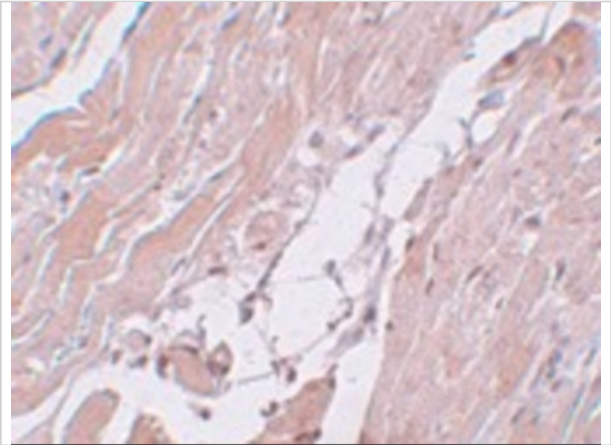
### Properties

Purification	CCDC47 Antibody is affinity chromatography purified via peptide column.
Clonality	Polyclonal
Isotype	IgG
Physical State	Liquid
Buffer	CCDC47 Antibody is supplied in PBS containing 0.02% sodium azide.
Concentration	1 mg/mL
Storage Conditions	CCDC47 antibody can be stored at 4°C for three months and -20°C, stable for up to one year. As with all antibodies care should be taken to avoid repeated freeze thaw cycles. Antibodies should not be exposed to prolonged high temperatures.



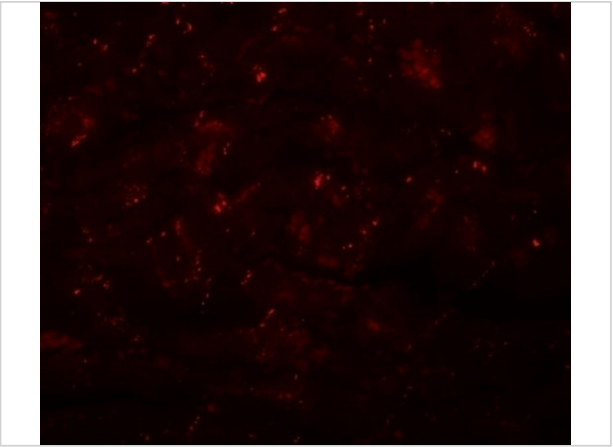
CCDC47 Antibody 1

Western blot analysis of CCDC47 in mouse heart tissue lysate with CCDC47 antibody at (A) 1 and (B) 2 µg/mL.



CCDC47 Antibody 2

Immunohistochemistry of CCDC47 in mouse heart tissue with CCDC47 antibody at 5 µg/mL.



CCDC47 Antibody 3

Immunofluorescence of CDCC47 in mouse heart tissue with CDCC47 antibody at 20 µg/mL.

Disclaimer

Disclaimer	Optimal dilutions/concentrations should be determined by the end user. The information provided is a guideline for product use. This product is for research use only.
------------	------------------------------------------------------------------------------------------------------------------------------------------------------------------------

For research use only. For additional information, visit ProSci's [Terms and Conditions Page](#).