

PLEKHM3 Antibody

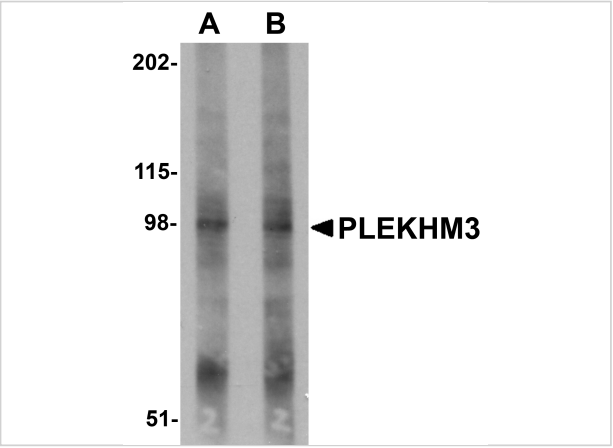
CATALOG NUMBER: 5487

Specifications

Host Species	Rabbit
Species Reactivity	Human, Mouse, Rat
Immunogen	PLEKHM3 antibody was raised against a 13 amino acid synthetic peptide from near the carboxy terminus of human PLEKHM3. The immunogen is located within the last 50 amino acids of PLEKHM3.
Conjugate	Unconjugated
Tested Applications	ELISA, IF, IHC-P, WB
User Note	Optimal dilutions for each application to be determined by the researcher.

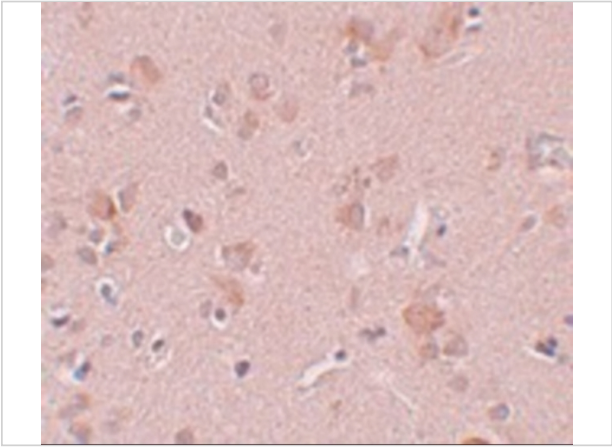
Properties

Purification	PLEKHM3 Antibody is affinity chromatography purified via peptide column.
Clonality	Polyclonal
Isotype	IgG
Physical State	Liquid
Buffer	PLEKHM3 Antibody is supplied in PBS containing 0.02% sodium azide.
Concentration	1 mg/mL
Storage Conditions	PLEKHM3 antibody can be stored at 4°C for three months and -20°C, stable for up to one year. As with all antibodies care should be taken to avoid repeated freeze thaw cycles. Antibodies should not be exposed to prolonged high temperatures.



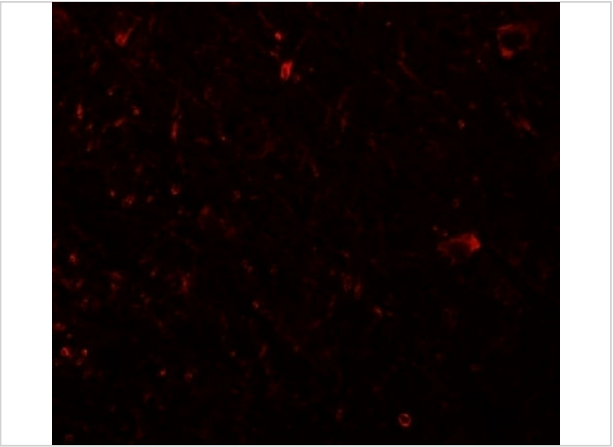
PLEKHM3 Antibody 1

Western blot analysis of PLEKHM3 in mouse skeletal muscle tissue lysate with PLEKHM3 antibody at (A) 1 and (B) 2 µg/mL.



PLEKHM3 Antibody 2

Immunohistochemistry of PLEKHM3 in human brain tissue with PLEKHM3 antibody at 5 µg/mL.



PLEKHM3 Antibody 3

Immunofluorescence of PLEKHM3 in human brain tissue with PLEKHM3 antibody at 20 µg/mL.

Disclaimer

Disclaimer	Optimal dilutions/concentrations should be determined by the end user. The information provided is a guideline for product use. This product is for research use only.
-------------------	------------------------------------------------------------------------------------------------------------------------------------------------------------------------

For research use only. For additional information, visit ProSci's [Terms and Conditions Page](#).