

## FRMPD4 Antibody

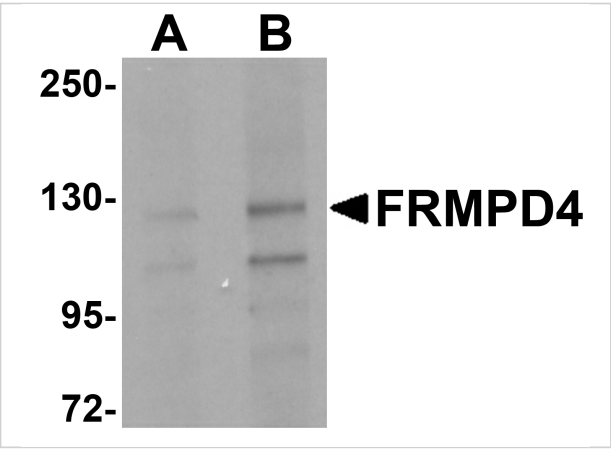
CATALOG NUMBER: 5459

### Specifications

Host Species	Rabbit
Species Reactivity	Human
Homology	Predicted species reactivity based on immunogen sequence: Mouse: (94%)
Immunogen	FRMPD4 antibody was raised against an 18 amino acid synthetic peptide from near the center of human FRMPD4. The immunogen is located within amino acids 620 - 670 of FRMPD4.
Conjugate	Unconjugated
Tested Applications	ELISA, IF, IHC-P, WB
User Note	Optimal dilutions for each application to be determined by the researcher.

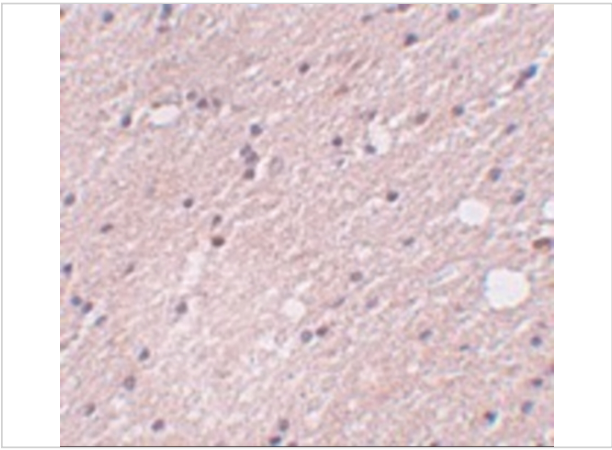
### Properties

Purification	FRMPD4 Antibody is affinity chromatography purified via peptide column.
Clonality	Polyclonal
Isotype	IgG
Physical State	Liquid
Buffer	FRMPD4 Antibody is supplied in PBS containing 0.02% sodium azide.
Concentration	1 mg/mL
Storage Conditions	FRMPD4 antibody can be stored at 4°C for three months and -20°C, stable for up to one year. As with all antibodies care should be taken to avoid repeated freeze thaw cycles. Antibodies should not be exposed to prolonged high temperatures.



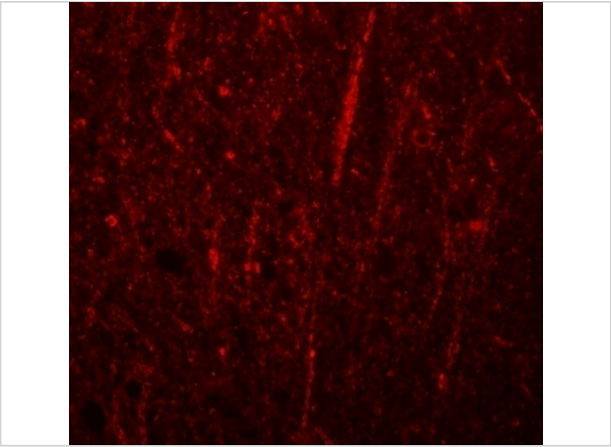
FRMPD4 Antibody 1

Western blot analysis of FRMPD4 in SK-N-SH cell lysate with FRMPD4 antibody at (A) 1 and (B) 2 µg/mL.



FRMPD4 Antibody 2

Immunohistochemistry of FRMPD4 in human brain tissue with FRMPD4 antibody at 5 µg/mL.



FRMPD4 Antibody 3

Immunofluorescence of FRMPD4 in human brain tissue with FRMPD4 antibody at 20 µg/mL.

Disclaimer

Disclaimer	Optimal dilutions/concentrations should be determined by the end user. The information provided is a guideline for product use. This product is for research use only.
------------	--

For research use only. For additional information, visit ProSci's [Terms and Conditions Page](#).