



ProSci Incorporated  
12170 Flint Place  
Poway, CA 92064, USA  
prosci-inc.com

P: +1 (888) 513-9525  
Local: +1 (858) 513-2638  
Fax: +1 (858) 513-2692

customercare@prosci-inc.com  
techsupport@prosci-inc.com

## West Nile Virus Core Antibody

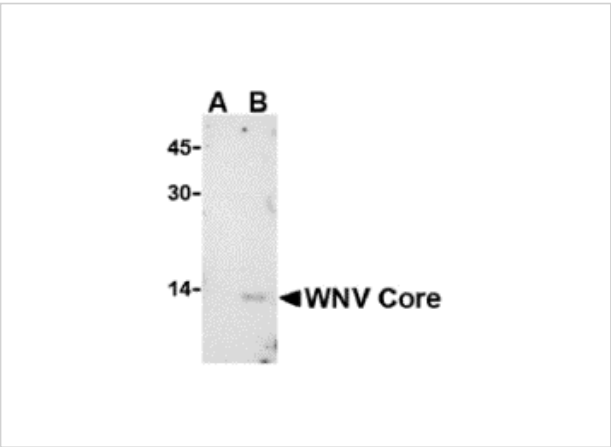
CATALOG NUMBER: 3435

### Specifications

Host Species	Rabbit
Species Reactivity	Virus
Immunogen	West Nile Virus Core antibody was raised against a synthetic peptide corresponding to 15 amino acids near the carboxy terminus of the West Nile Virus core protein. The immunogen is located within amino acids 80 - 130 of West Nile Virus Core.
Conjugate	Unconjugated
Tested Applications	ELISA, ICC, WB
User Note	Optimal dilutions for each application to be determined by the researcher.

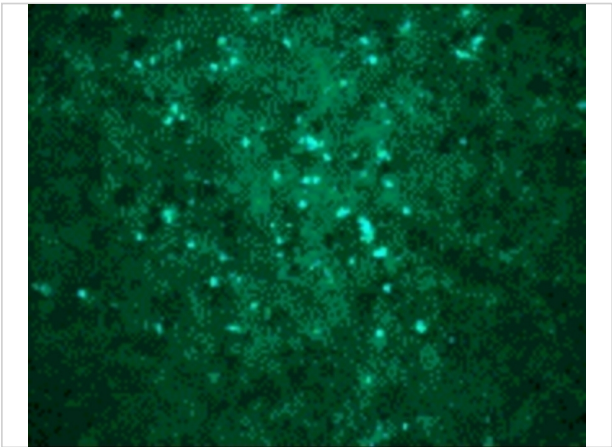
### Properties

Purification	West Nile Virus Core Antibody is affinity chromatography purified via peptide column.
Clonality	Polyclonal
Isotype	IgG
Physical State	Liquid
Buffer	West Nile Virus Core Antibody is supplied in PBS containing 0.02% sodium azide.
Concentration	1 mg/mL
Storage Conditions	West Nile Virus Core antibody can be stored at 4°C for three months and -20°C, stable for up to one year. As with all antibodies care should be taken to avoid repeated freeze thaw cycles. Antibodies should not be exposed to prolonged high temperatures.



West Nile Virus Core Antibody 1

Western blot analysis of WNV Core in (A) untransfected or (B) transfected HeLa lysate with WNV Core antibody at 1 µg/mL.



West Nile Virus Core Antibody 2

Immunocytochemical staining of transfected Vero cells using WNV Core antibody at 20 µg/mL.

Disclaimer

Disclaimer	Optimal dilutions/concentrations should be determined by the end user. The information provided is a guideline for product use. This product is for research use only.
------------	--

For research use only. For additional information, visit ProSci's [Terms and Conditions Page](#).