

## Prosapip1 Antibody

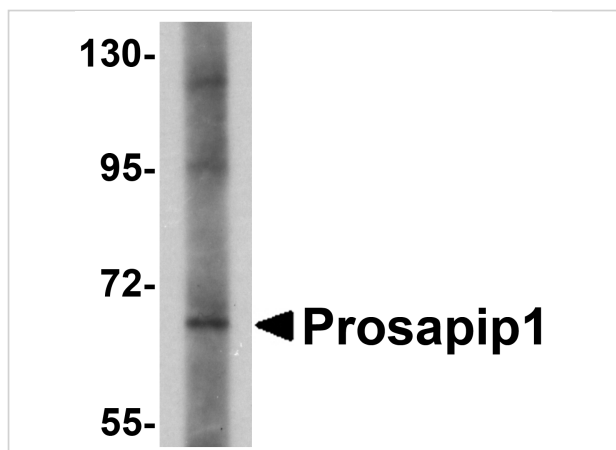
CATALOG NUMBER: 5395

### Specifications

Host Species	Rabbit
Species Reactivity	Human, Mouse, Rat
Immunogen	Prosapip1 antibody was raised against a 16 amino acid synthetic peptide from near the carboxy terminus of human Prosapip1. The immunogen is located within amino acids 590 - 640 of Prosapip1.
Conjugate	Unconjugated
Tested Applications	ELISA, IF, IHC-P, WB
User Note	Optimal dilutions for each application to be determined by the researcher.

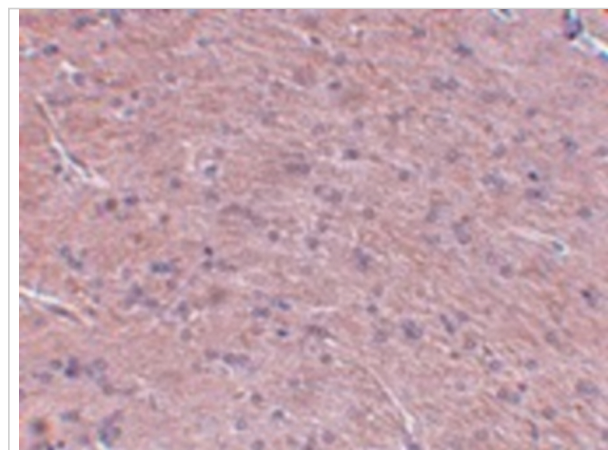
### Properties

Purification	Prosapip1 Antibody is affinity chromatography purified via peptide column.
Clonality	Polyclonal
Isotype	IgG
Physical State	Liquid
Buffer	Prosapip1 Antibody is supplied in PBS containing 0.02% sodium azide.
Concentration	1 mg/mL
Storage Conditions	Prosapip1 antibody can be stored at 4°C for three months and -20°C, stable for up to one year. As with all antibodies care should be taken to avoid repeated freeze thaw cycles. Antibodies should not be exposed to prolonged high temperatures.



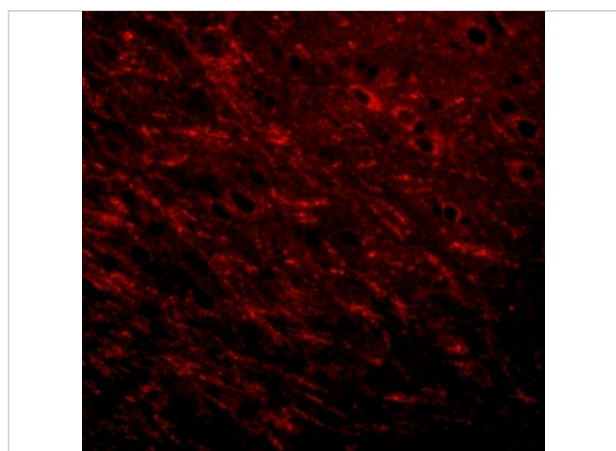
### Prosapip1 Antibody 1

Western blot analysis of Prosapip1 in SK-N-SH cell lysate with Prosapip1 antibody at 1 µg/mL.



### Prosapip1 Antibody 2

Immunohistochemistry of Prosapip1 in rat brain tissue with Prosapip1 antibody at 2.5 µg/mL.



### Prosapip1 Antibody 3

Immunofluorescence of Prosapip1 in rat brain tissue with Prosapip1 antibody at 20 µg/mL.

## Disclaimer

#### Disclaimer

Optimal dilutions/concentrations should be determined by the end user. The information provided is a guideline for product use. This product is for research use only.

For research use only. For additional information, visit ProSci's [Terms and Conditions Page](#).