

JMJD6 Antibody

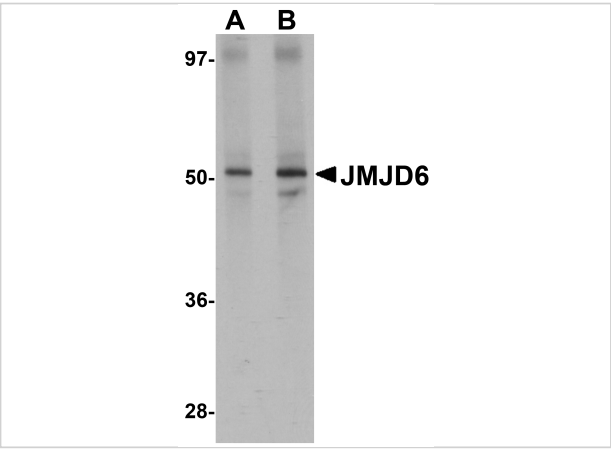
CATALOG NUMBER: 5383

Specifications

Host Species	Rabbit
Species Reactivity	Human, Mouse, Rat
Homology	Predicted species reactivity based on immunogen sequence: Chicken: (100%), Bovine: (100%)
Immunogen	JMJD6 antibody was raised against a 15 amino acid synthetic peptide from near the amino terminus of human JMJD6. The immunogen is located within amino acids 70 - 120 of JMJD6.
Conjugate	Unconjugated
Tested Applications	ELISA, IF, IHC-P, WB
User Note	Optimal dilutions for each application to be determined by the researcher.

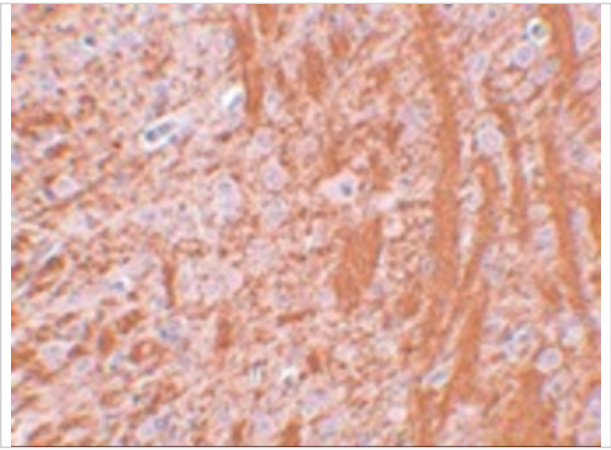
Properties

Purification	JMJD6 Antibody is affinity chromatography purified via peptide column.
Clonality	Polyclonal
Isotype	IgG
Physical State	Liquid
Buffer	JMJD6 Antibody is supplied in PBS containing 0.02% sodium azide.
Concentration	1 mg/mL
Storage Conditions	JMJD6 antibody can be stored at 4°C for three months and -20°C, stable for up to one year. As with all antibodies care should be taken to avoid repeated freeze thaw cycles. Antibodies should not be exposed to prolonged high temperatures.



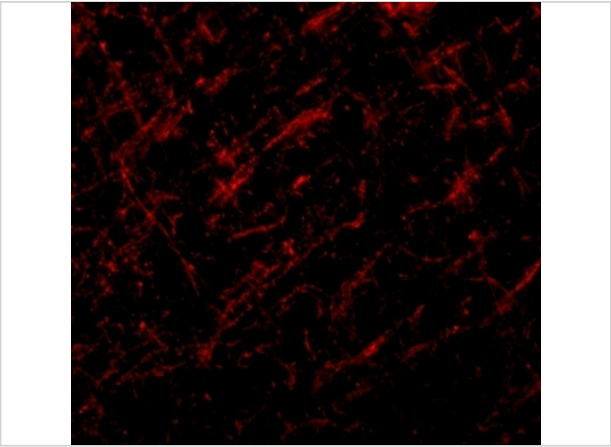
JMJD6 Antibody 1

Western blot analysis of JMJD6 in human brain tissue lysate with JMJD6 antibody at (A) 1 and (B) 2 $\mu\text{g/mL}$.



JMJD6 Antibody 2

Immunohistochemistry of JMJD6 in rat brain tissue with JMJD6 antibody at 2.5 $\mu\text{g/mL}$.



JMJD6 Antibody 3

Immunofluorescence of JMJD6 in rat brain tissue with JMJD6 antibody at 20 $\mu\text{g/mL}$.

Disclaimer

Disclaimer	Optimal dilutions/concentrations should be determined by the end user. The information provided is a guideline for product use. This product is for research use only.
-------------------	--

For research use only. For additional information, visit ProSci's [Terms and Conditions Page](#).