

TWA1 Antibody

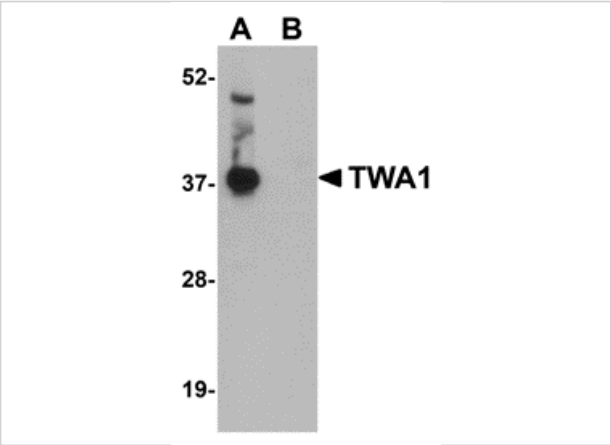
CATALOG NUMBER: 5305

Specifications

Host Species	Rabbit
Species Reactivity	Human, Mouse, Rat
Homology	Predicted species reactivity based on immunogen sequence: Chicken: (100%), Bovine: (100%)
Immunogen	TWA1 antibody was raised against a 17 amino acid synthetic peptide near the carboxy terminus of human TWA1. The immunogen is located within the last 50 amino acids of TWA1.
Conjugate	Unconjugated
Tested Applications	ELISA, IF, IHC-P, WB
User Note	Optimal dilutions for each application to be determined by the researcher.

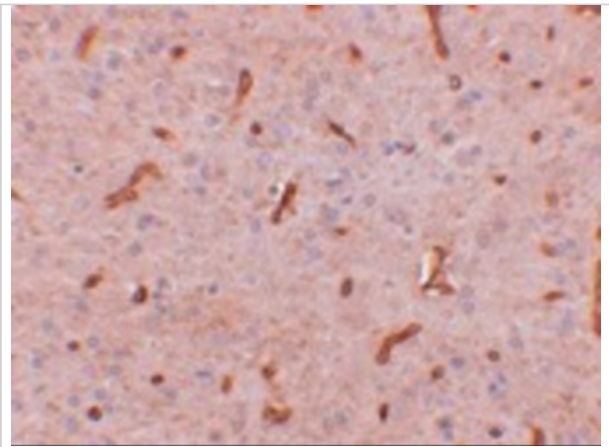
Properties

Purification	TWA1 Antibody is affinity chromatography purified via peptide column.
Clonality	Polyclonal
Isotype	IgG
Physical State	Liquid
Buffer	TWA1 Antibody is supplied in PBS containing 0.02% sodium azide.
Concentration	1 mg/mL
Storage Conditions	TWA1 antibody can be stored at 4°C for three months and -20°C, stable for up to one year. As with all antibodies care should be taken to avoid repeated freeze thaw cycles. Antibodies should not be exposed to prolonged high temperatures.



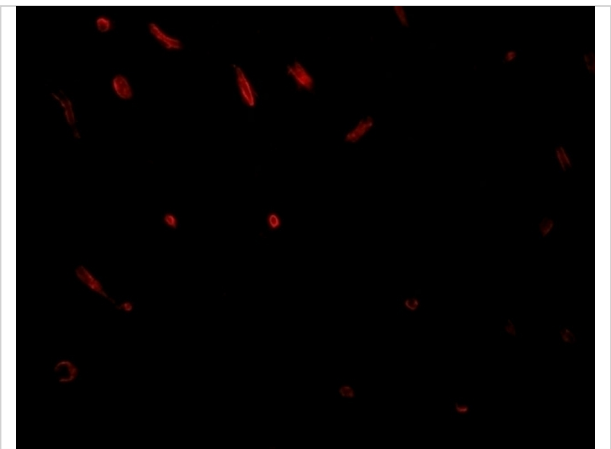
TWA1 Antibody 1

Western blot analysis of TWA1 in human brain tissue lysate with TWA1 antibody at 1 µg/mL in (A) the absence and (B) the presence of blocking peptide.



TWA1 Antibody 2

Immunohistochemistry of TWA1 in rat brain tissue with TWA1 antibody at 2.5 µg/mL.



TWA1 Antibody 3

Immunofluorescence of TWA1 in rat brain tissue with TWA1 antibody at 20 µg/mL.

Disclaimer

Disclaimer	Optimal dilutions/concentrations should be determined by the end user. The information provided is a guideline for product use. This product is for research use only.
------------	--

For research use only. For additional information, visit ProSci's [Terms and Conditions Page](#).