



ProSci Incorporated
12170 Flint Place
Poway, CA 92064, USA
prosci-inc.com

P: +1 (888) 513-9525
Local: +1 (858) 513-2638
Fax: +1 (858) 513-2692

customercare@prosci-inc.com
techsupport@prosci-inc.com

TMEM214 Antibody

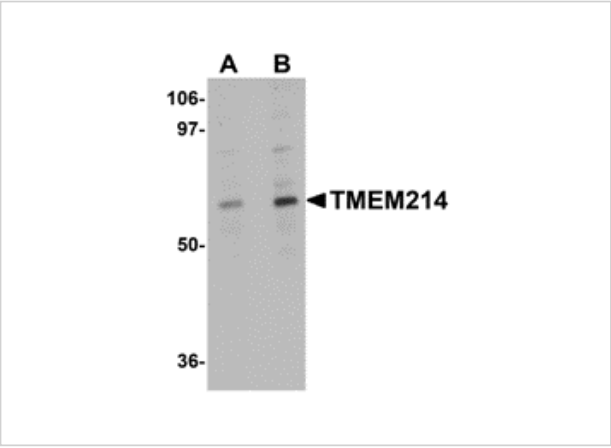
CATALOG NUMBER: 5297

Specifications

| | |
|---------------------|---|
| Host Species | Rabbit |
| Species Reactivity | Human, Mouse, Rat |
| Homology | Predicted species reactivity based on immunogen sequence: Bovine: (94%) |
| Immunogen | TMEM214 antibody was raised against a 17 amino acid synthetic peptide near the amino terminus of human TMEM214. The immunogen is located within amino acids 70 - 120 of TMEM214. |
| Conjugate | Unconjugated |
| Tested Applications | ELISA, ICC, IF, WB |
| User Note | Optimal dilutions for each application to be determined by the researcher. |

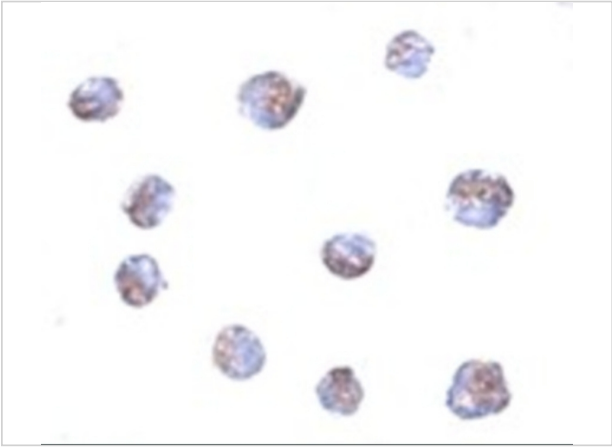
Properties

| | |
|--------------------|---|
| Purification | TMEM214 Antibody is affinity chromatography purified via peptide column. |
| Clonality | Polyclonal |
| Isotype | IgG |
| Physical State | Liquid |
| Buffer | TMEM214 Antibody is supplied in PBS containing 0.02% sodium azide. |
| Concentration | 1 mg/mL |
| Storage Conditions | TMEM214 antibody can be stored at 4°C for three months and -20°C, stable for up to one year. As with all antibodies care should be taken to avoid repeated freeze thaw cycles. Antibodies should not be exposed to prolonged high temperatures. |



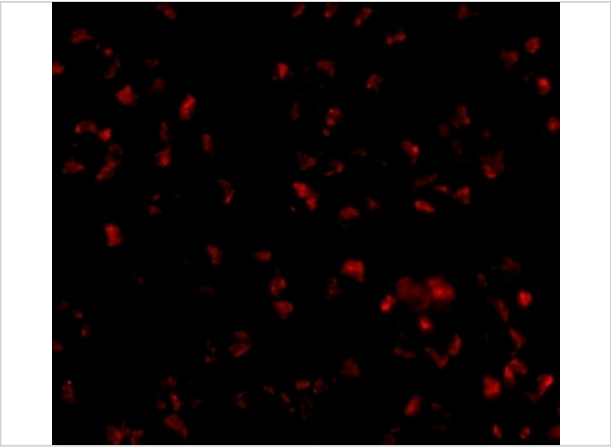
TMEM214 Antibody 1

Western blot analysis of TMEM214 in A20 cell lysate with TMEM214 antibody at (A) 1 and (B) 2 µg/mL.



TMEM214 Antibody 2

Immunocytochemistry of TMEM214 in A20 cells with TMEM214 antibody at 5 µg/mL.



TMEM214 Antibody 3

Immunofluorescence of TMEM214 in A20 cells with TMEM214 antibody at 20 µg/mL.

Disclaimer

| | |
|------------|--|
| Disclaimer | Optimal dilutions/concentrations should be determined by the end user. The information provided is a guideline for product use. This product is for research use only. |
|------------|--|

For research use only. For additional information, visit ProSci's [Terms and Conditions Page](#).