

## NOTUM Antibody

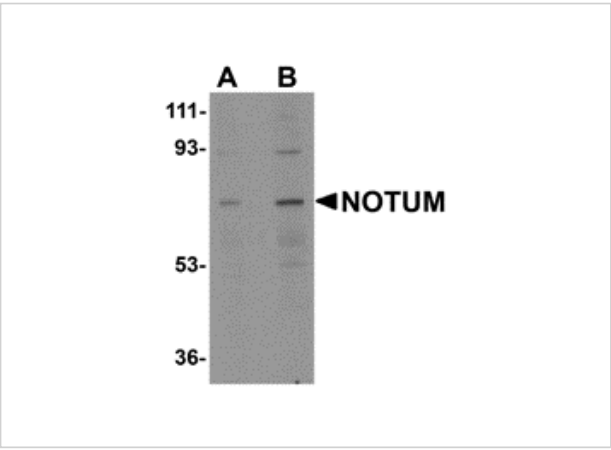
CATALOG NUMBER: 5291

### Specifications

Host Species	Rabbit
Species Reactivity	Human, Mouse, Rat
Immunogen	NOTUM antibody was raised against a 19 amino acid synthetic peptide near the amino terminus of human NOTUM. The immunogen is located within amino acids 90 - 140 of NOTUM.
Conjugate	Unconjugated
Tested Applications	ELISA, IF, IHC-P, WB
User Note	Optimal dilutions for each application to be determined by the researcher.

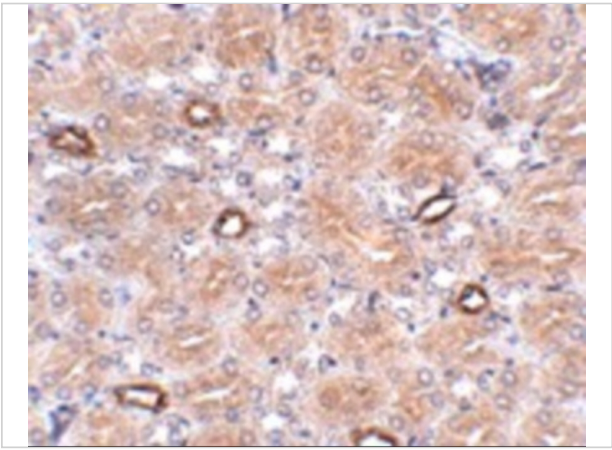
### Properties

Purification	NOTUM Antibody is affinity chromatography purified via peptide column.
Clonality	Polyclonal
Isotype	IgG
Physical State	Liquid
Buffer	NOTUM Antibody is supplied in PBS containing 0.02% sodium azide.
Concentration	1 mg/mL
Storage Conditions	NOTUM antibody can be stored at 4°C for three months and -20°C, stable for up to one year. As with all antibodies care should be taken to avoid repeated freeze thaw cycles. Antibodies should not be exposed to prolonged high temperatures.



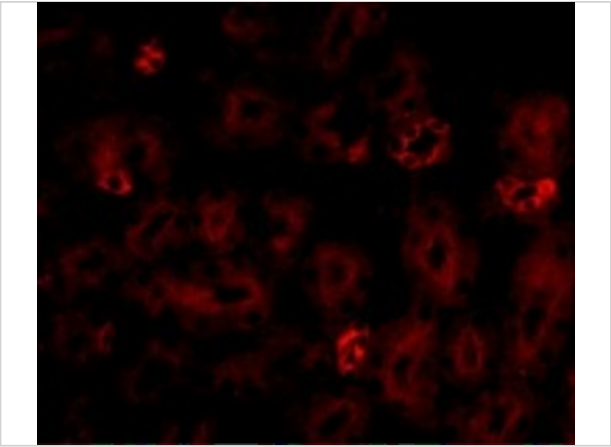
### NOTUM Antibody 1

Western blot analysis of NOTUM in human kidney tissue lysate with NOTUM antibody at (A) 0.5 and (B) 1  $\mu\text{g/mL}$ .



### NOTUM Antibody 2

Immunohistochemistry of NOTUM in human brain tissue with NOTUM antibody at 2.5  $\mu\text{g/mL}$ .



### NOTUM Antibody 3

Immunofluorescence of NOTUM in Mouse Kidney cells with NOTUM antibody at 20  $\mu\text{g/mL}$ .

## Disclaimer

Disclaimer	Optimal dilutions/concentrations should be determined by the end user. The information provided is a guideline for product use. This product is for research use only.
------------	--

For research use only. For additional information, visit ProSci's [Terms and Conditions Page](#).