

PALB2 Antibody

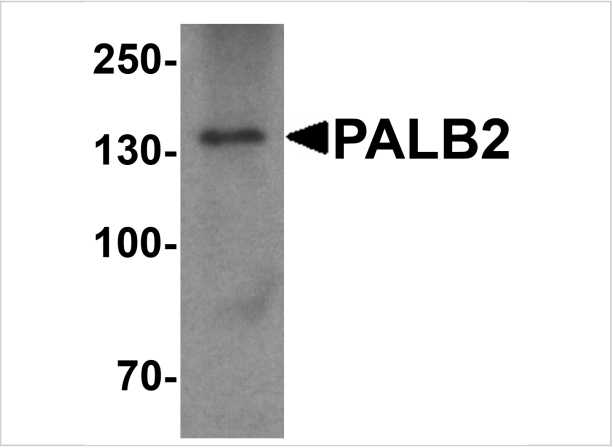
CATALOG NUMBER: 5275

Specifications

Host Species	Rabbit
Species Reactivity	Human, Mouse, Rat
Immunogen	PALB2 antibody was raised against a 15 amino acid synthetic peptide from near the carboxy terminus of human PALB2. The immunogen is located within amino acids 940 - 990 of PALB2.
Conjugate	Unconjugated
Tested Applications	ELISA, WB
User Note	Optimal dilutions for each application to be determined by the researcher.
Specificity	At least four isoforms of PALB2 are known to exist; this antibody will detect all four isoforms.
Predicted Molecular Weight	Predicted: 65, 100, 130 kDa Observed: 140 kDa

Properties

Purification	PALB2 Antibody is affinity chromatography purified via peptide column.
Clonality	Polyclonal
Isotype	IgG
Physical State	Liquid
Buffer	PALB2 Antibody is supplied in PBS containing 0.02% sodium azide.
Concentration	1 mg/mL
Storage Conditions	PALB2 antibody can be stored at 4°C for three months and -20°C, stable for up to one year. As with all antibodies care should be taken to avoid repeated freeze thaw cycles. Antibodies should not be exposed to prolonged high temperatures.



PALB2 Antibody 1

Western blot analysis of PALB2 in SK-N-SH cell lysate with PALB2 antibody at 1 µg/mL.

Disclaimer

Disclaimer	Optimal dilutions/concentrations should be determined by the end user. The information provided is a guideline for product use. This product is for research use only.
-------------------	--

For research use only. For additional information, visit ProSci's [Terms and Conditions Page](#).