

ARL15 Antibody

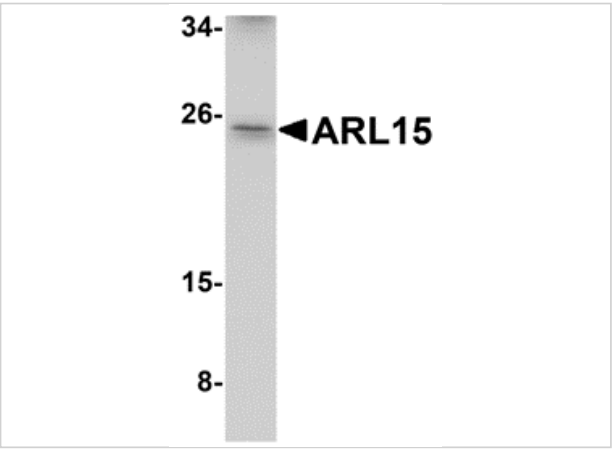
CATALOG NUMBER: 5263

Specifications

Host Species	Rabbit
Species Reactivity	Human, Mouse, Rat
Homology	Predicted species reactivity based on immunogen sequence: Bovine: (94%)
Immunogen	ARL15 antibody was raised against a 17 amino acid synthetic peptide near the center of human ARL15. The immunogen is located within amino acids 130 - 180 of ARL15.
Conjugate	Unconjugated
Tested Applications	ELISA, IHC-P, WB
User Note	Optimal dilutions for each application to be determined by the researcher.

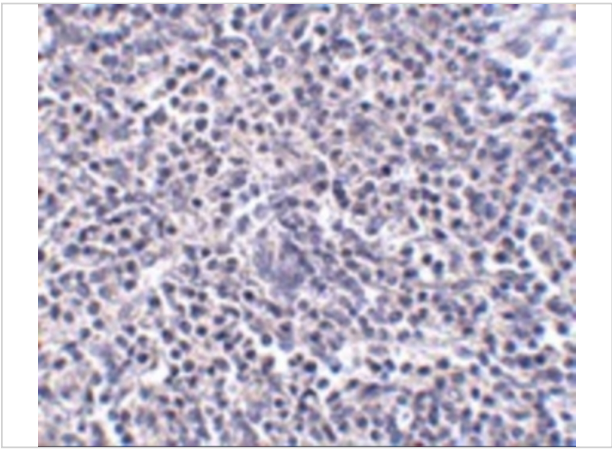
Properties

Purification	ARL15 Antibody is affinity chromatography purified via peptide column.
Clonality	Polyclonal
Isotype	IgG
Physical State	Liquid
Buffer	ARL15 Antibody is supplied in PBS containing 0.02% sodium azide.
Concentration	1 mg/mL
Storage Conditions	ARL15 antibody can be stored at 4°C for three months and -20°C, stable for up to one year. As with all antibodies care should be taken to avoid repeated freeze thaw cycles. Antibodies should not be exposed to prolonged high temperatures.



ARL15 Antibody 1

Western blot analysis of ARL15 in K562 cell lysate with ARL15 antibody at 1 µg/mL.



ARL15 Antibody 2

Immunohistochemistry of ARL15 in human spleen tissue with ARL15 antibody at 5 µg/mL.

Disclaimer

Disclaimer	Optimal dilutions/concentrations should be determined by the end user. The information provided is a guideline for product use. This product is for research use only.
------------	--

For research use only. For additional information, visit ProSci's [Terms and Conditions Page](#).