



ProSci Incorporated
12170 Flint Place
Poway, CA 92064, USA
prosci-inc.com

P: +1 (888) 513-9525
Local: +1 (858) 513-2638
Fax: +1 (858) 513-2692

customercare@prosci-inc.com
techsupport@prosci-inc.com

Swine H1N1 Neuraminidase Antibody

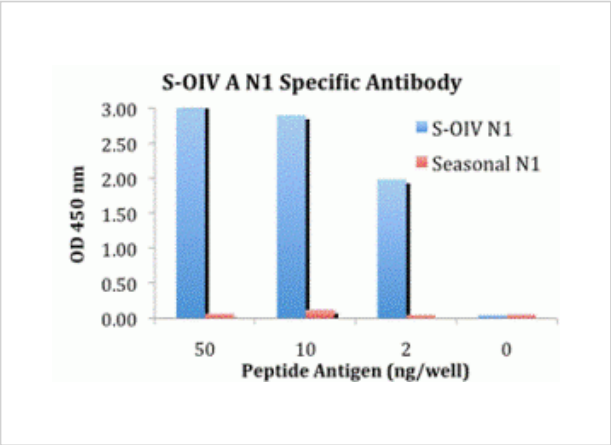
CATALOG NUMBER: 5249

Specifications

Host Species	Rabbit
Species Reactivity	Virus
Immunogen	Neuraminidase antibody was raised against a synthetic peptide from the novel swine influenza Neuraminidase protein. This antibody is a cognate pair with product 5247. The immunogen is located within amino acids 50 - 100 of Swine H1N1 Neuraminidase.
Conjugate	Unconjugated
Tested Applications	ELISA
User Note	Optimal dilutions for each application to be determined by the researcher.
Specificity	This antibody is specific for the novel swine influenza Neuraminidase and will not recognize the corresponding Neuraminidase sequence from the seasonal H1N1 influenza (A/Georgia/20/2006 (H1N1)). Will not cross-react with peptide corresponding to the seasonal influenza (H1N1) Neuraminidase.

Properties

Purification	Swine H1N1 Neuraminidase Antibody is affinity chromatography purified via peptide column.
Clonality	Polyclonal
Isotype	IgG
Physical State	Liquid
Buffer	Swine H1N1 Neuraminidase Antibody is supplied in PBS containing 0.02% sodium azide.
Concentration	1 mg/mL
Storage Conditions	Swine H1N1 Neuraminidase antibody can be stored at 4°C up to one year. Antibodies should not be exposed to prolonged high temperatures.



Swine H1N1 Neuraminidase Antibody 1

ELISA results using Swine H1N1 Neuraminidase antibody at 1 µg/mL and the blocking and corresponding peptides at 50, 10, 2 and 0 ng/mL.

Disclaimer

Disclaimer	Optimal dilutions/concentrations should be determined by the end user. The information provided is a guideline for product use. This product is for research use only.
------------	--

For research use only. For additional information, visit ProSci's [Terms and Conditions Page](#).