



ProSci Incorporated
12170 Flint Place
Poway, CA 92064, USA
prosci-inc.com

P: +1 (888) 513-9525
Local: +1 (858) 513-2638
Fax: +1 (858) 513-2692

customercare@prosci-inc.com
techsupport@prosci-inc.com

Swine H1N1 Hemagglutinin Antibody

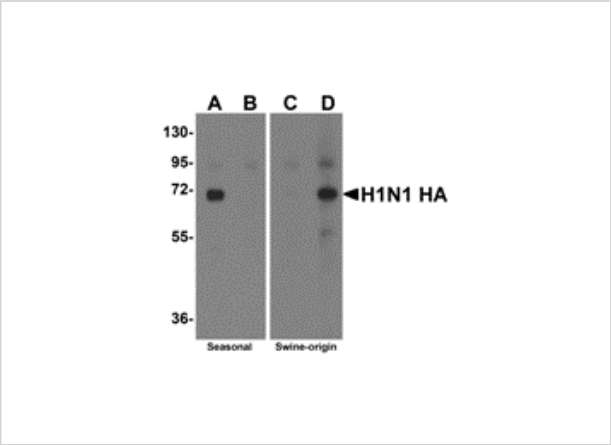
CATALOG NUMBER: 5233

Specifications

Host Species	Rabbit
Species Reactivity	Virus
Immunogen	Hemagglutinin antibody was raised against a synthetic peptide from the novel swine influenza Hemagglutinin protein. The peptide sequence is unique from the peptide sequence for product 5237 and 5241. This antibody is a cognate pair with product 5231. The immunogen is located within amino acids 120 - 170 of Swine H1N1 Hemagglutinin.
Conjugate	Unconjugated
Tested Applications	ELISA, WB
User Note	Optimal dilutions for each application to be determined by the researcher.

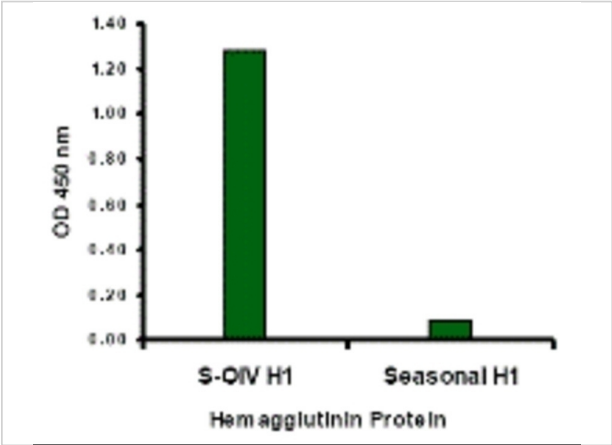
Properties

Purification	Swine H1N1 Hemagglutinin Antibody is affinity chromatography purified via peptide column.
Clonality	Polyclonal
Isotype	IgG
Physical State	Liquid
Buffer	Swine H1N1 Hemagglutinin Antibody is supplied in PBS containing 0.02% sodium azide.
Concentration	1 mg/mL
Storage Conditions	Swine H1N1 Hemagglutinin antibody can be stored at 4°C for three months and -20°C, stable for up to one year. As with all antibodies care should be taken to avoid repeated freeze thaw cycles. Antibodies should not be exposed to prolonged high temperatures.



Swine H1N1 Hemagglutinin Antibody 1

Western blot analysis of Hemagglutinin using recombinant seasonal Hemagglutinin (lanes A & B) and swine-origin Hemagglutinin (lanes C & D) with anti-seasonal Hemagglutinin antibody (5231) at 2 µg/mL...



Swine H1N1 Hemagglutinin Antibody 2

Swine-origin Hemagglutinin antibody at 2 µg/mL specifically recognizes swine-origin influenza virus (S-OIV) A H1N1 but not seasonal influenza virus A H1N1 Hemagglutinin protein.

Disclaimer

Disclaimer	Optimal dilutions/concentrations should be determined by the end user. The information provided is a guideline for product use. This product is for research use only.
------------	--

For research use only. For additional information, visit ProSci's [Terms and Conditions Page](#).