

SHOC2 Antibody

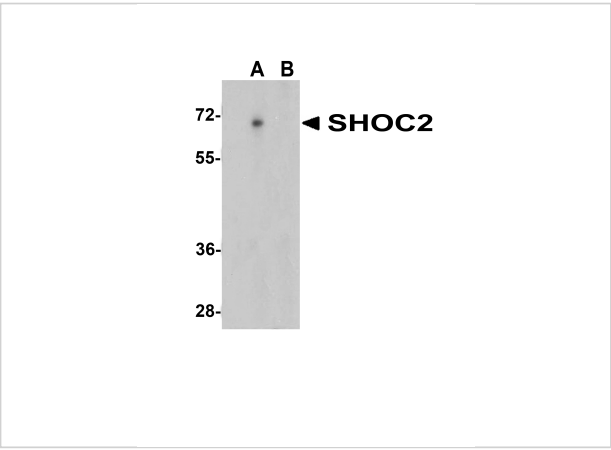
CATALOG NUMBER: 5215

Specifications

Host Species	Rabbit
Species Reactivity	Human, Mouse, Rat
Homology	Predicted species reactivity based on immunogen sequence: Bovine: (100%), Chicken: (100%)
Immunogen	SHOC2 antibody was raised against a 21 amino acid synthetic peptide near the amino terminus of human SHOC2. The immunogen is located within amino acids 30 - 80 of SHOC2.
Conjugate	Unconjugated
Tested Applications	ELISA, IHC-P, WB
User Note	Optimal dilutions for each application to be determined by the researcher.

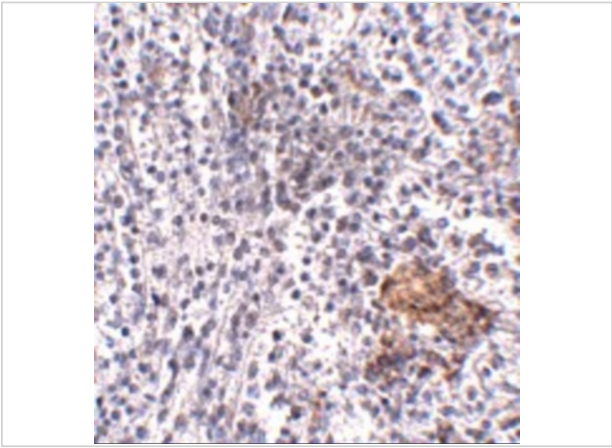
Properties

Purification	SHOC2 Antibody is affinity chromatography purified via peptide column.
Clonality	Polyclonal
Isotype	IgG
Physical State	Liquid
Buffer	SHOC2 Antibody is supplied in PBS containing 0.02% sodium azide.
Concentration	1 mg/mL
Storage Conditions	SHOC2 antibody can be stored at 4°C for three months and -20°C, stable for up to one year. As with all antibodies care should be taken to avoid repeated freeze thaw cycles. Antibodies should not be exposed to prolonged high temperatures.



SHOC2 Antibody 1

Western blot analysis of SHOC2 in Jurkat cell lysate with SHOC2 antibody at 1 µg/mL in (A) the absence and (B) the presence of blocking peptide



SHOC2 Antibody 2

Immunohistochemistry of SHOC2 in human spleen tissue with SHOC2 antibody at 5 µg/mL.

Disclaimer

Disclaimer	Optimal dilutions/concentrations should be determined by the end user. The information provided is a guideline for product use. This product is for research use only.
------------	--

For research use only. For additional information, visit ProSci's [Terms and Conditions Page](#).