

Fibulin 3 Antibody

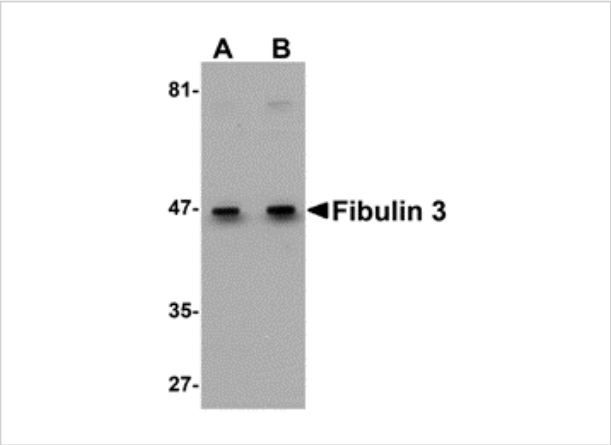
CATALOG NUMBER: 5213

Specifications

Host Species	Rabbit
Species Reactivity	Human, Mouse, Rat
Immunogen	Fibulin 3 antibody was raised against a 19 amino acid synthetic peptide near the carboxy terminus of human Fibulin 3. The immunogen is located within amino acids 410 - 460 of Fibulin 3.
Conjugate	Unconjugated
Tested Applications	ELISA, ICC, IF, WB
User Note	Optimal dilutions for each application to be determined by the researcher.
Specificity	At least three isoforms of Fibulin 3 are known to exist. This antibody is predicted to not cross-react with other Fibulin proteins.
Predicted Molecular Weight	Predicted: 52 kDa Observed: 47 kDa

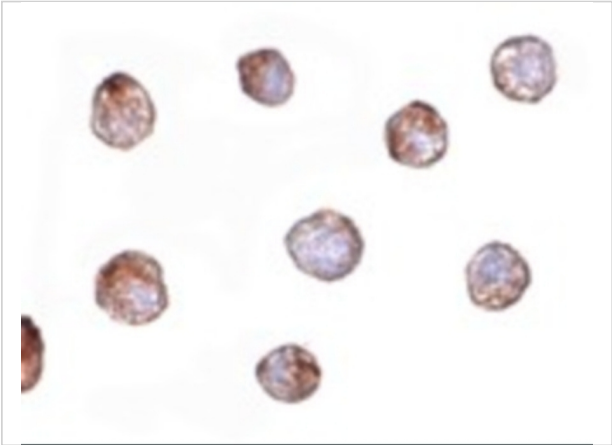
Properties

Purification	Fibulin 3 Antibody is affinity chromatography purified via peptide column.
Clonality	Polyclonal
Isotype	IgG
Physical State	Liquid
Buffer	Fibulin 3 Antibody is supplied in PBS containing 0.02% sodium azide.
Concentration	1 mg/mL
Storage Conditions	Fibulin 3 antibody can be stored at 4°C for three months and -20°C, stable for up to one year. As with all antibodies care should be taken to avoid repeated freeze thaw cycles. Antibodies should not be exposed to prolonged high temperatures.



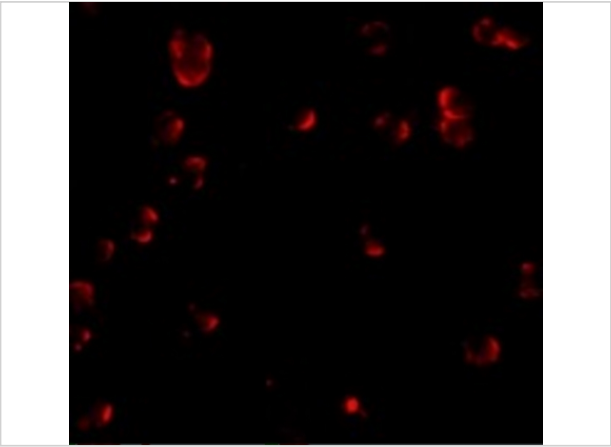
Fibulin 3 Antibody 1

Western blot analysis of Fibulin 3 in HeLa cell lysate with Fibulin 3 antibody at (A) 0.5 and (B) 1 µg/mL.



Fibulin 3 Antibody 2

Immunocytochemistry of Fibulin 3 in HeLa cells with Fibulin 3 antibody at 20 µg/mL.



Fibulin 3 Antibody 3

Immunofluorescence of Fibulin 3 in HeLa cells with Fibulin 3 antibody at 20 µg/mL.

Disclaimer

Disclaimer	Optimal dilutions/concentrations should be determined by the end user. The information provided is a guideline for product use. This product is for research use only.
------------	--

For research use only. For additional information, visit ProSci's [Terms and Conditions Page](#).