

RGS21 Antibody

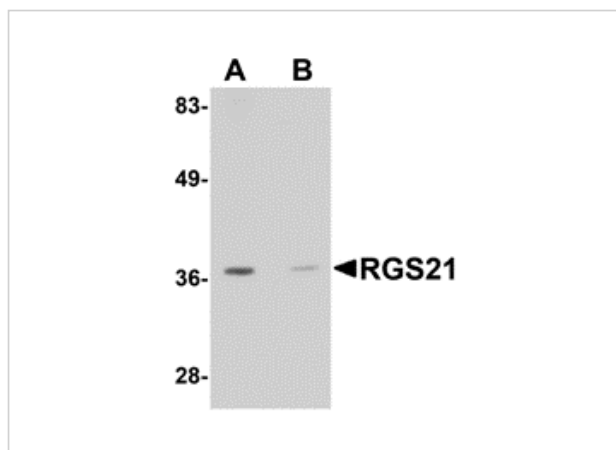
CATALOG NUMBER: 5209

Specifications

Host Species	Rabbit
Species Reactivity	Human
Immunogen	RGS21 antibody was raised against a 16 amino acid synthetic peptide near the center of human RGS21. The immunogen is located within amino acids 40 - 90 of RGS21.
Conjugate	Unconjugated
Tested Applications	ELISA, IF, IHC-P, WB
User Note	Optimal dilutions for each application to be determined by the researcher.

Properties

Purification	RGS21 Antibody is affinity chromatography purified via peptide column.
Clonality	Polyclonal
Isotype	IgG
Physical State	Liquid
Buffer	RGS21 Antibody is supplied in PBS containing 0.02% sodium azide.
Concentration	1 mg/mL
Storage Conditions	RGS21 antibody can be stored at 4°C for three months and -20°C, stable for up to one year. As with all antibodies care should be taken to avoid repeated freeze thaw cycles. Antibodies should not be exposed to prolonged high temperatures.



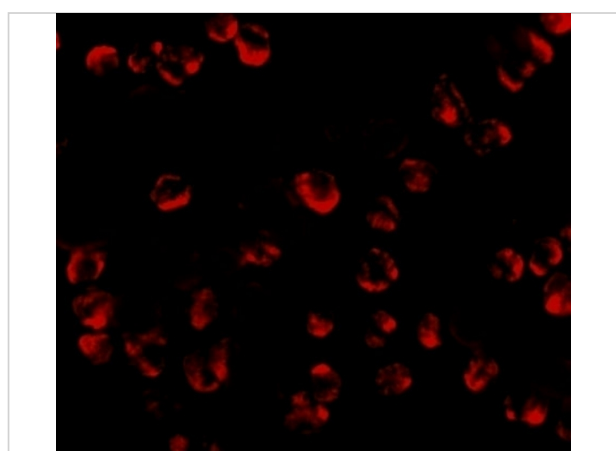
RGS21 Antibody 1

Western blot analysis of RGS21 in HepG2 cell lysate with RGS21 antibody at 0.5 $\mu\text{g/mL}$ in (A) the absence and (B) the presence of blocking peptide.



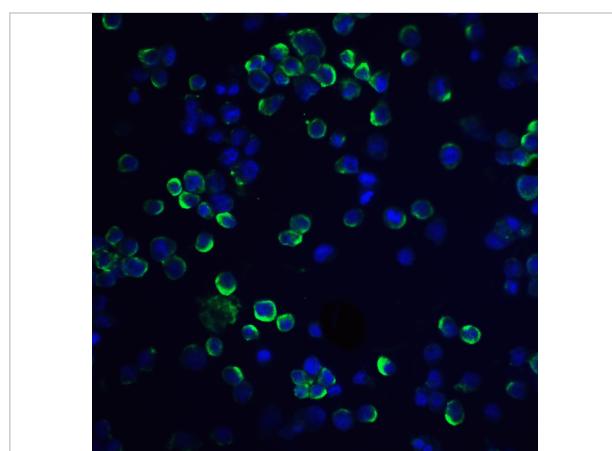
RGS21 Antibody 2

Immunocytochemistry of RGS21 in HepG2 cells with RGS21 antibody at 2.5 $\mu\text{g/mL}$.



RGS21 Antibody 3

Immunofluorescence of RGS21 in HepG2 cells with RGS21 antibody at 20 $\mu\text{g/mL}$.



RGS21 Antibody 4

Immunofluorescence of RGS21 in HepG2 cells with RGS21 antibody at 20 $\mu\text{g/mL}$.

Green: RGS21 Antibody (5209)
Blue: DAPI staining

Disclaimer

Disclaimer

Optimal dilutions/concentrations should be determined by the end user. The information provided is a guideline for product use. This product is for research use only.

For research use only. For additional information, visit ProSci's [Terms and Conditions Page](#).