

MACC1 Antibody

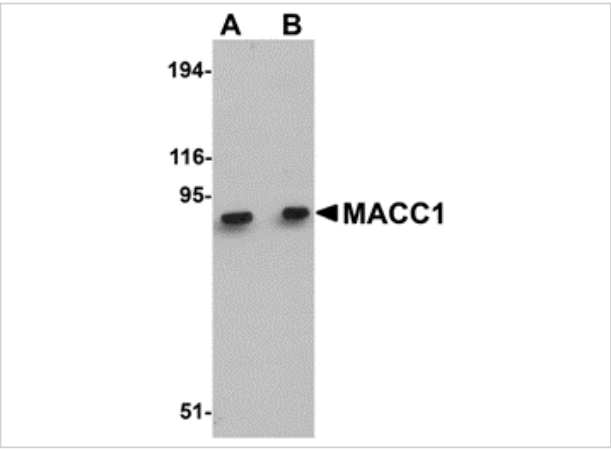
CATALOG NUMBER: 5197

Specifications

Host Species	Rabbit
Species Reactivity	Human, Mouse, Rat
Immunogen	MACC1 antibody was raised against a 17 amino acid synthetic peptide near the center of human MACC1. The immunogen is located within amino acids 430 - 480 of MACC1.
Conjugate	Unconjugated
Tested Applications	ELISA, IF, IHC-P, WB
User Note	Optimal dilutions for each application to be determined by the researcher.
Specificity	At least two isoforms of MACC1 are known to exist.
Predicted Molecular Weight	Predicted: 94 kDa Observed: 90 kDa

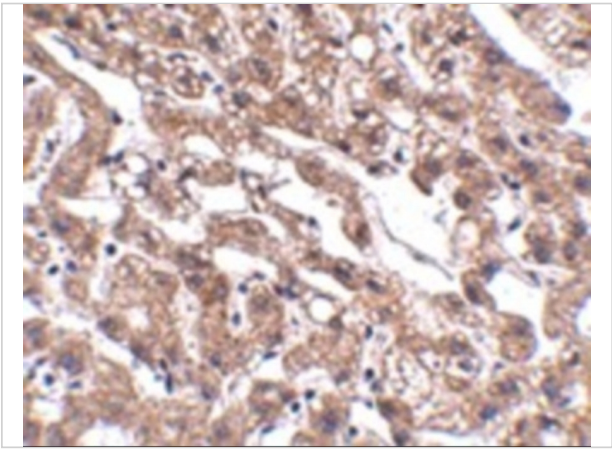
Properties

Purification	MACC1 Antibody is affinity chromatography purified via peptide column.
Clonality	Polyclonal
Isotype	IgG
Physical State	Liquid
Buffer	MACC1 Antibody is supplied in PBS containing 0.02% sodium azide.
Concentration	1 mg/mL
Storage Conditions	MACC1 antibody can be stored at 4°C for three months and -20°C, stable for up to one year. As with all antibodies care should be taken to avoid repeated freeze thaw cycles. Antibodies should not be exposed to prolonged high temperatures.



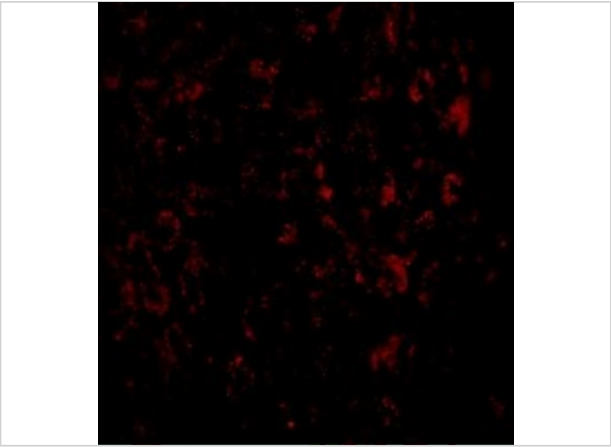
MACC1 Antibody 1

Western blot analysis of MACC1 in mouse liver tissue lysate with MACC1 antibody at (A) 1 and (B) 2 $\mu\text{g/mL}$.



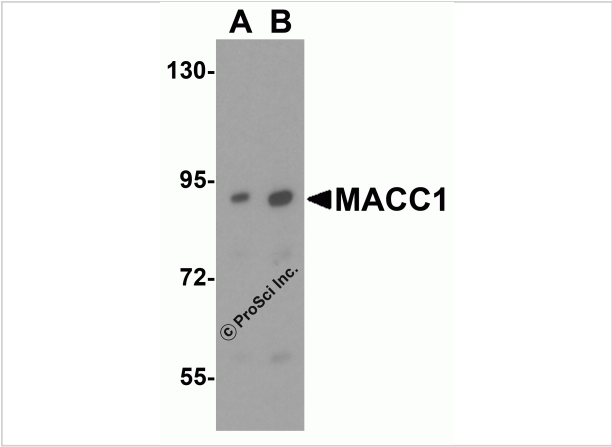
MACC1 Antibody 2

Immunohistochemistry of MACC1 in human liver tissue with MACC1 antibody at 2.5 $\mu\text{g/mL}$.



MACC1 Antibody 3

Immunofluorescence of MACC1 in Human Liver cells with MACC1 antibody at 20 $\mu\text{g/mL}$.



MACC1 Antibody 4

Western blot analysis of MACC1 expression in human liver tissue lysate with MACC1 antibody at (A) 1 and (B) 2 $\mu\text{g/mL}$.

Disclaimer

Disclaimer	Optimal dilutions/concentrations should be determined by the end user. The information provided is a guideline for product use. This product is for research use only.
------------	--

For research use only. For additional information, visit ProSci's [Terms and Conditions Page](#).