

GPR3 Antibody

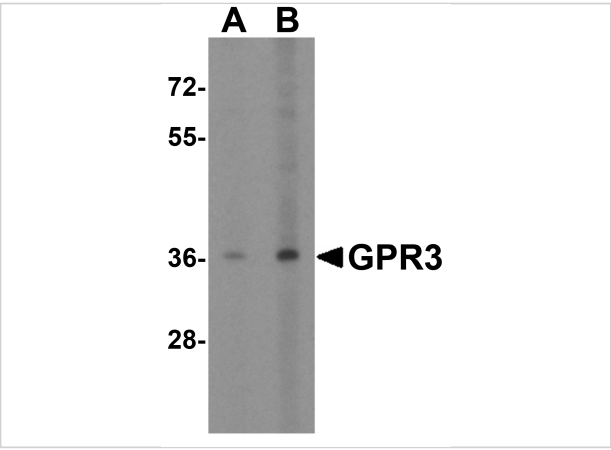
CATALOG NUMBER: 5175

Specifications

Host Species	Rabbit
Species Reactivity	Human, Mouse, Rat
Immunogen	GPR3 antibody was raised against a 13 amino acid synthetic peptide from near the carboxy terminus of human GPR3. The immunogen is located within the last 50 amino acids of GPR3.
Conjugate	Unconjugated
Tested Applications	ELISA, IF, IHC-P, WB
User Note	Optimal dilutions for each application to be determined by the researcher.
Predicted Molecular Weight	Predicted: 36 kDa Observed: 36 kDa

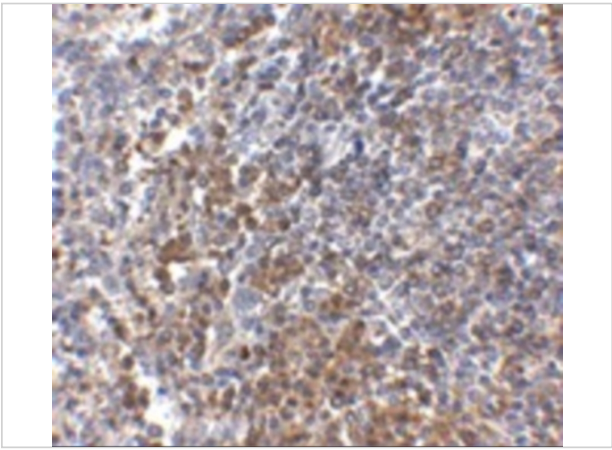
Properties

Purification	GPR3 Antibody is affinity chromatography purified via peptide column.
Clonality	Polyclonal
Isotype	IgG
Physical State	Liquid
Buffer	GPR3 Antibody is supplied in PBS containing 0.02% sodium azide.
Concentration	1 mg/mL
Storage Conditions	GPR3 antibody can be stored at 4°C for three months and -20°C, stable for up to one year. As with all antibodies care should be taken to avoid repeated freeze thaw cycles. Antibodies should not be exposed to prolonged high temperatures.



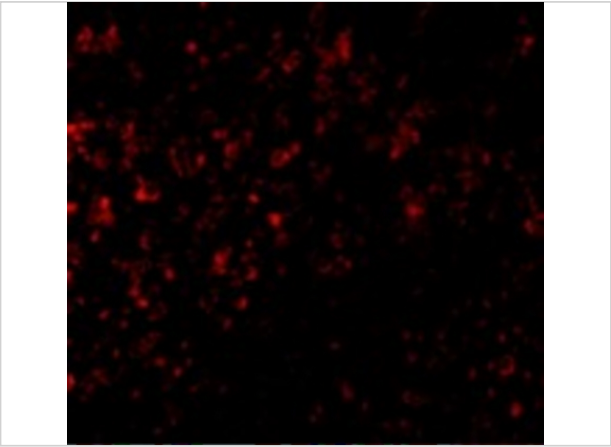
GPR3 Antibody 1

Western blot analysis of GPR3 in EL4 cell lysate with GPR3 antibody at (A) 1 and (B) 2 $\mu\text{g/mL}$.



GPR3 Antibody 2

Immunohistochemistry of GPR3 in human spleen tissue with GPR3 antibody at 2.5 $\mu\text{g/mL}$.



GPR3 Antibody 3

Immunofluorescence of GPR3 in Human Spleen cells with GPR3 antibody at 20 $\mu\text{g/mL}$.

Disclaimer

Disclaimer	Optimal dilutions/concentrations should be determined by the end user. The information provided is a guideline for product use. This product is for research use only.
------------	--

For research use only. For additional information, visit ProSci's [Terms and Conditions Page](#).