

SH3BP4 Antibody

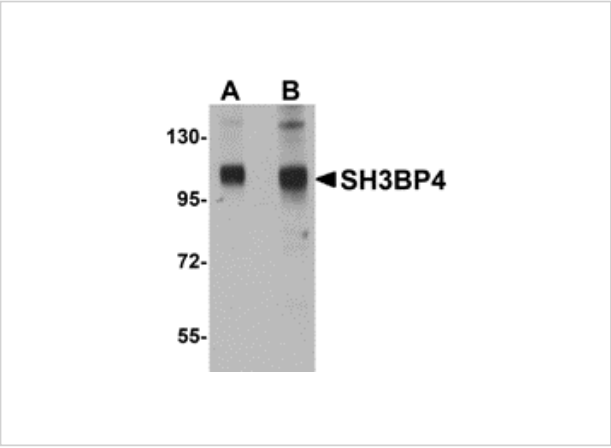
CATALOG NUMBER: 5167

Specifications

Host Species	Rabbit
Species Reactivity	Human, Mouse, Rat
Immunogen	SH3BP4 antibody was raised against an 18 amino acid synthetic peptide from near the carboxy terminus of human SH3BP4. The immunogen is located within amino acids 860 - 910 of SH3BP4.
Conjugate	Unconjugated
Tested Applications	ELISA, IHC-P, WB
User Note	Optimal dilutions for each application to be determined by the researcher.

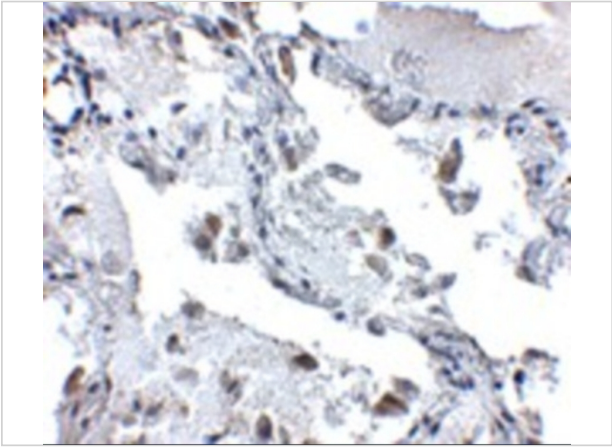
Properties

Purification	SH3BP4 Antibody is affinity chromatography purified via peptide column.
Clonality	Polyclonal
Isotype	IgG
Physical State	Liquid
Buffer	SH3BP4 Antibody is supplied in PBS containing 0.02% sodium azide.
Concentration	1 mg/mL
Storage Conditions	SH3BP4 antibody can be stored at 4°C for three months and -20°C, stable for up to one year. As with all antibodies care should be taken to avoid repeated freeze thaw cycles. Antibodies should not be exposed to prolonged high temperatures.



SH3BP4 Antibody 1

Western blot analysis of SH3BP4 in rat lung tissue lysate with SH3BP4 antibody at (A) 1 and (B) 2 µg/mL.



SH3BP4 Antibody 2

Immunohistochemistry of SH3BP4 in human lung tissue with SH3BP4 antibody at 5 µg/mL.

Disclaimer

Disclaimer	Optimal dilutions/concentrations should be determined by the end user. The information provided is a guideline for product use. This product is for research use only.
------------	--

For research use only. For additional information, visit ProSci's [Terms and Conditions Page](#).