

LDL-R Antibody

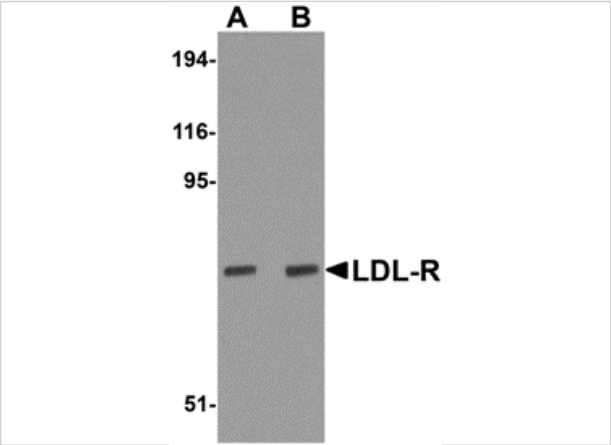
CATALOG NUMBER: 5163

Specifications

Host Species	Chicken
Species Reactivity	Human, Mouse, Rat
Homology	Predicted species reactivity based on immunogen sequence: Pig: (89%), Rabbit: (80%)
Immunogen	LDL-R antibody was raised against an 18 amino acid synthetic peptide near the center of human LDL-R. The immunogen is located within amino acids 490 - 540 of LDL-R.
Conjugate	Unconjugated
Tested Applications	ELISA, IF, IHC-P, WB
User Note	Optimal dilutions for each application to be determined by the researcher.

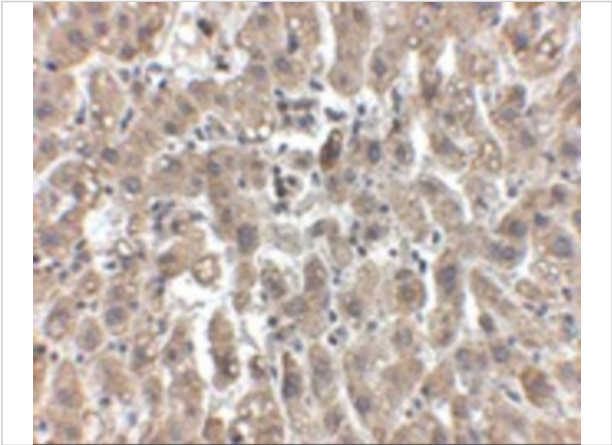
Properties

Purification	LDL-R Antibody is affinity chromatography purified via peptide column.
Clonality	Polyclonal
Isotype	IgY
Physical State	Liquid
Buffer	LDL-R Antibody is supplied in PBS containing 0.02% sodium azide.
Concentration	1 mg/mL
Storage Conditions	LDL-R antibody can be stored at 4°C for three months and -20°C, stable for up to one year. As with all antibodies care should be taken to avoid repeated freeze thaw cycles. Antibodies should not be exposed to prolonged high temperatures.



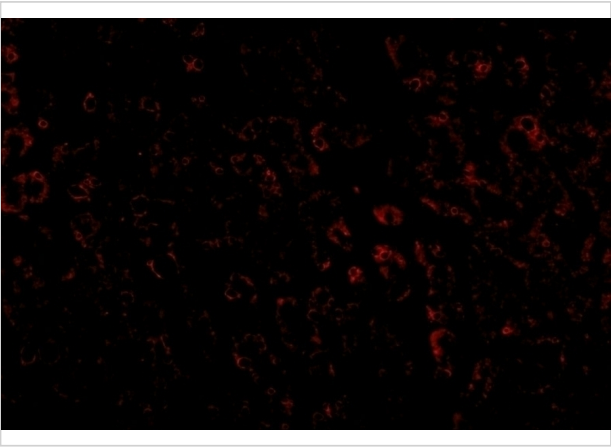
LDL-R Antibody 1

Western blot analysis of LDL-R in human liver tissue lysate with LDL-R antibody at (A) 1 and (B) 2 µg/mL.



LDL-R Antibody 2

Immunohistochemistry of LDL-R in human liver tissue with LDL-R antibody at 2.5 µg/mL.



LDL-R Antibody 3

Immunofluorescence of LDLR in human liver tissue with LDLR antibody at 20 µg/mL.

Disclaimer

Disclaimer	Optimal dilutions/concentrations should be determined by the end user. The information provided is a guideline for product use. This product is for research use only.
------------	--

For research use only. For additional information, visit ProSci's [Terms and Conditions Page](#).