

MATN3 Antibody

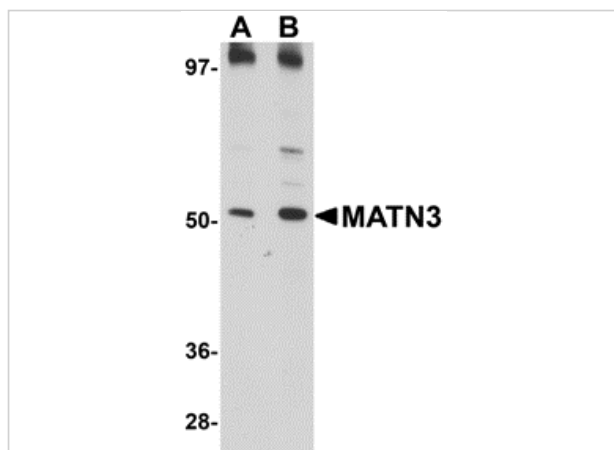
CATALOG NUMBER: 5127

Specifications

Host Species	Rabbit
Species Reactivity	Human, Mouse, Rat
Homology	Predicted species reactivity based on immunogen sequence: Chicken: (90%)
Immunogen	MATN3 antibody was raised against a 13 amino acid synthetic peptide from near the carboxy terminus of human MATN3. The immunogen is located within amino acids 400 - 450 of MATN3.
Conjugate	Unconjugated
Tested Applications	ELISA, ICC, WB
User Note	Optimal dilutions for each application to be determined by the researcher.

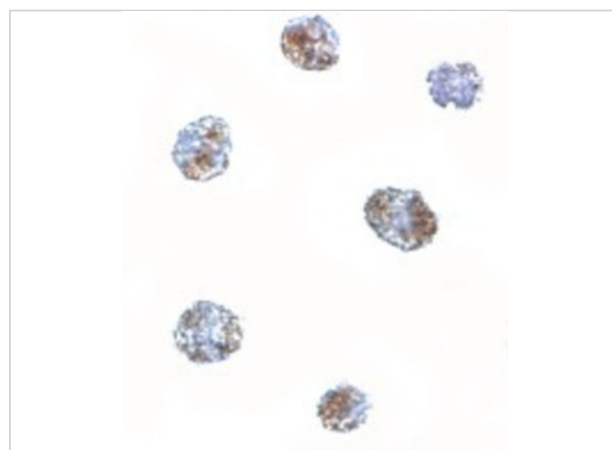
Properties

Purification	MATN3 Antibody is affinity chromatography purified via peptide column.
Clonality	Polyclonal
Isotype	IgG
Physical State	Liquid
Buffer	MATN3 Antibody is supplied in PBS containing 0.02% sodium azide.
Concentration	1 mg/mL
Storage Conditions	MATN3 antibody can be stored at 4°C for three months and -20°C, stable for up to one year. As with all antibodies care should be taken to avoid repeated freeze thaw cycles. Antibodies should not be exposed to prolonged high temperatures.



MATN3 Antibody 1

Western blot analysis of MATN3 in 3T3 cell lysate with MATN3 antibody at (A) 1 and (B) 2 $\mu\text{g/mL}$.



MATN3 Antibody 2

Immunocytochemistry of MATN3 in 3T3 cells with MATN3 antibody at 5 $\mu\text{g/mL}$.

Disclaimer

Disclaimer

Optimal dilutions/concentrations should be determined by the end user. The information provided is a guideline for product use. This product is for research use only.

For research use only. For additional information, visit ProSci's [Terms and Conditions Page](#).