

TAB2 Antibody

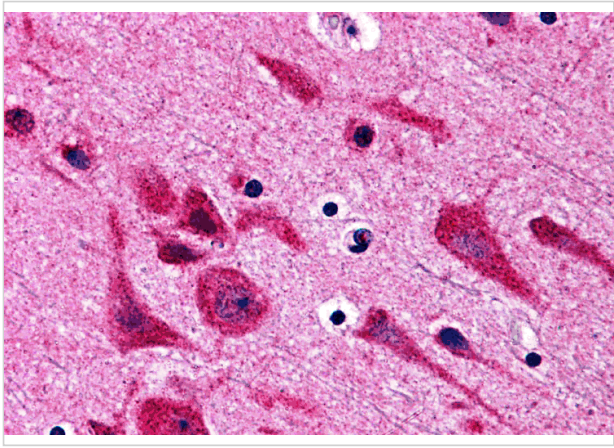
CATALOG NUMBER: 3389

Specifications

Host Species	Rabbit
Species Reactivity	Human
Homology	Predicted species reactivity based on immunogen sequence: Rat: (86%), Mouse: (79%)
Immunogen	TAB2 antibody was raised against a 14 amino acid synthetic peptide near the carboxy terminus of human TAB2. The immunogen is located within the last 50 amino acids of TAB2.
Conjugate	Unconjugated
Tested Applications	ELISA, IHC-P
User Note	Optimal dilutions for each application to be determined by the researcher.
Specificity	TAB2 antibody is human specific. TAB2 antibody is predicted not to cross-react with other TAB proteins.

Properties

Purification	TAB2 Antibody is affinity chromatography purified via peptide column.
Clonality	Polyclonal
Isotype	IgG
Physical State	Liquid
Buffer	TAB2 Antibody is supplied in PBS containing 0.02% sodium azide.
Concentration	1 mg/mL
Storage Conditions	TAB2 antibody can be stored at 4°C for three months and -20°C, stable for up to one year. As with all antibodies care should be taken to avoid repeated freeze thaw cycles. Antibodies should not be exposed to prolonged high temperatures.



TAB2 Antibody 1

Immunohistochemistry of TAB2 in human brain tissue with TAB2 antibody at 5 µg/mL.

Disclaimer

Disclaimer	Optimal dilutions/concentrations should be determined by the end user. The information provided is a guideline for product use. This product is for research use only.
------------	------------------------------------------------------------------------------------------------------------------------------------------------------------------------

For research use only. For additional information, visit ProSci's [Terms and Conditions Page](#).