

ZBED1 Antibody

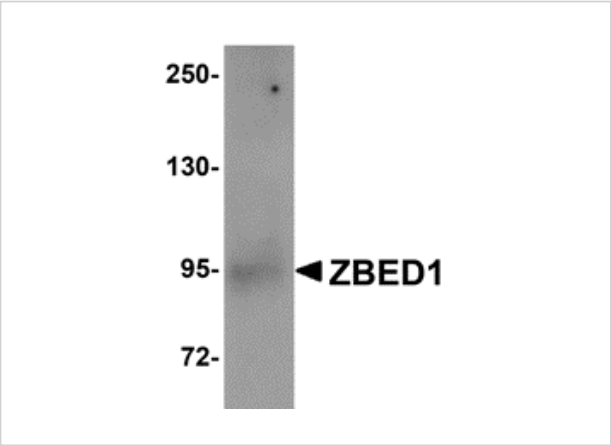
CATALOG NUMBER: 5111

Specifications

Host Species	Rabbit
Species Reactivity	Human, Mouse
Immunogen	ZBED1 antibody was raised against a 15 amino acid synthetic peptide from near the center of human ZBED1. The immunogen is located within amino acids 180 - 230 of ZBED1.
Conjugate	Unconjugated
Tested Applications	ELISA, WB
User Note	Optimal dilutions for each application to be determined by the researcher.
Specificity	This antibody is predicted to have no cross-reactivity to ZBED2 or ZBED3.

Properties

Purification	ZBED1 Antibody is affinity chromatography purified via peptide column.
Clonality	Polyclonal
Isotype	IgG
Physical State	Liquid
Buffer	ZBED1 Antibody is supplied in PBS containing 0.02% sodium azide.
Concentration	1 mg/mL
Storage Conditions	ZBED1 antibody can be stored at 4°C for three months and -20°C, stable for up to one year. As with all antibodies care should be taken to avoid repeated freeze thaw cycles. Antibodies should not be exposed to prolonged high temperatures.



ZBED1 Antibody 1

Western blot analysis of ZBED1 in A549 cell lysate with ZBED1 antibody at 1 µg/mL.

Disclaimer

Disclaimer	Optimal dilutions/concentrations should be determined by the end user. The information provided is a guideline for product use. This product is for research use only.
-------------------	--

For research use only. For additional information, visit ProSci's [Terms and Conditions Page](#).