

MATN2 Antibody

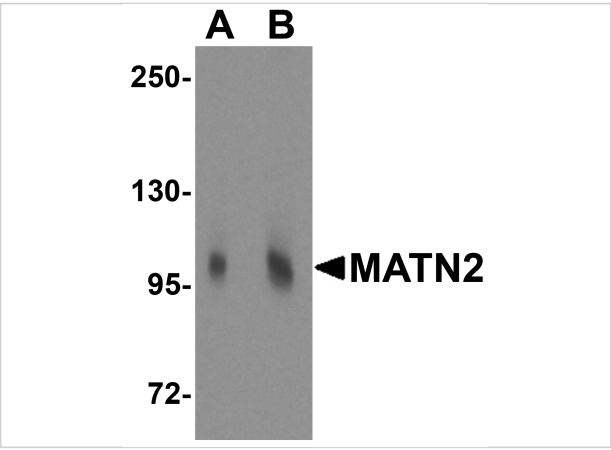
CATALOG NUMBER: 5105

Specifications

Host Species	Rabbit
Species Reactivity	Human, Mouse, Rat
Immunogen	MATN2 antibody was raised against a 15 amino acid synthetic peptide from near the carboxy terminus of human MATN2. The immunogen is located within amino acids 820 - 870 of MATN2.
Conjugate	Unconjugated
Tested Applications	ELISA, WB
User Note	Optimal dilutions for each application to be determined by the researcher.
Predicted Molecular Weight	Predicted: 102 kDa Observed: 105 kDa

Properties

Purification	MATN2 Antibody is affinity chromatography purified via peptide column.
Clonality	Polyclonal
Isotype	IgG
Physical State	Liquid
Buffer	MATN2 Antibody is supplied in PBS containing 0.02% sodium azide.
Concentration	1 mg/mL
Storage Conditions	MATN2 antibody can be stored at 4°C for three months and -20°C, stable for up to one year. As with all antibodies care should be taken to avoid repeated freeze thaw cycles. Antibodies should not be exposed to prolonged high temperatures.



MATN2 Antibody 1

Western blot analysis of MATN2 in 3T3 cell lysate with MATN2 antibody at (A) 1 and (B) 2 µg/mL.

Disclaimer

Disclaimer	Optimal dilutions/concentrations should be determined by the end user. The information provided is a guideline for product use. This product is for research use only.
-------------------	--

For research use only. For additional information, visit ProSci's [Terms and Conditions Page](#).