

Alpha-tubulin Antibody

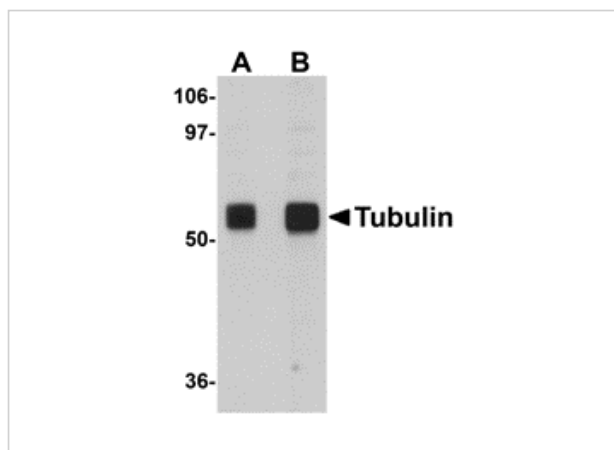
CATALOG NUMBER: 5103

Specifications

Host Species	Chicken
Species Reactivity	Human, Mouse, Rat
Homology	Predicted species reactivity based on immunogen sequence: Bovine: (100%), Pig: (100%), Chicken: (100%)
Immunogen	Tubulin antibody was raised against a 16 amino acid synthetic peptide near the amino terminus of human Tubulin. The immunogen is located within amino acids 140 - 190 of Alpha-tubulin.
Conjugate	Unconjugated
Tested Applications	ELISA, WB
User Note	Optimal dilutions for each application to be determined by the researcher.

Properties

Purification	Alpha-tubulin Antibody is affinity chromatography purified via peptide column.
Clonality	Polyclonal
Isotype	IgY
Physical State	Liquid
Buffer	Alpha-tubulin Antibody is supplied in PBS containing 0.02% sodium azide.
Concentration	1 mg/mL
Storage Conditions	Alpha-tubulin antibody can be stored at 4°C for three months and -20°C, stable for up to one year. As with all antibodies care should be taken to avoid repeated freeze thaw cycles. Antibodies should not be exposed to prolonged high temperatures.



Alpha-tubulin Antibody 1

Western blot analysis of Tubulin in rat brain tissue lysate with Tubulin antibody at (A) 0.5 and (B) 1 $\mu\text{g/mL}$.

Disclaimer

Disclaimer

Optimal dilutions/concentrations should be determined by the end user. The information provided is a guideline for product use. This product is for research use only.

For research use only. For additional information, visit ProSci's [Terms and Conditions Page](#).